



# CRANE ACCESSORIES



## **SAFETY CONDUCTOR SYSTEM**

- MULTIPLE LEADS TYPE
- I TYPE
- W TYPE

## **C TRACK SYSTEM**

- C30 TYPE

## **PUSH BUTTON PENDANT STATION**

## **RADIO REMOTE CONTROLLER**

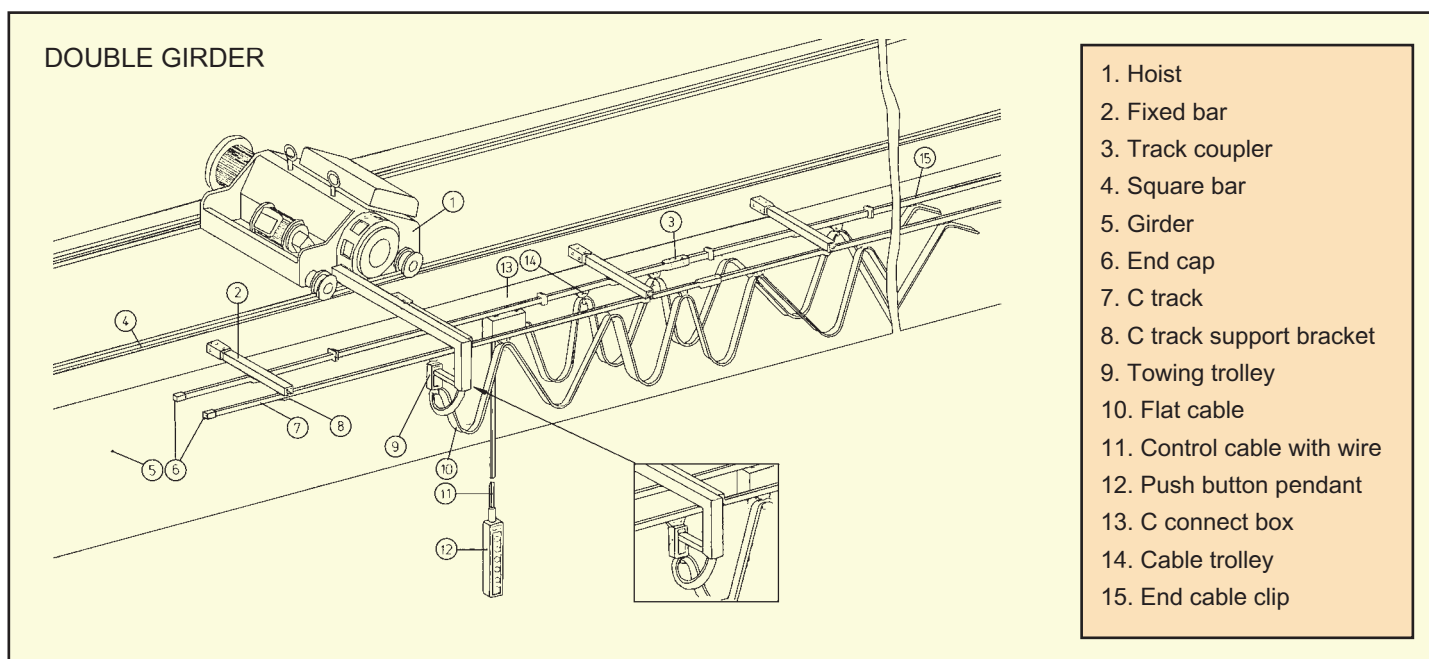
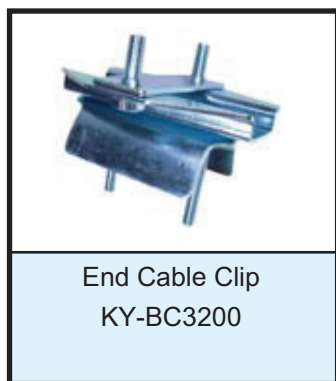
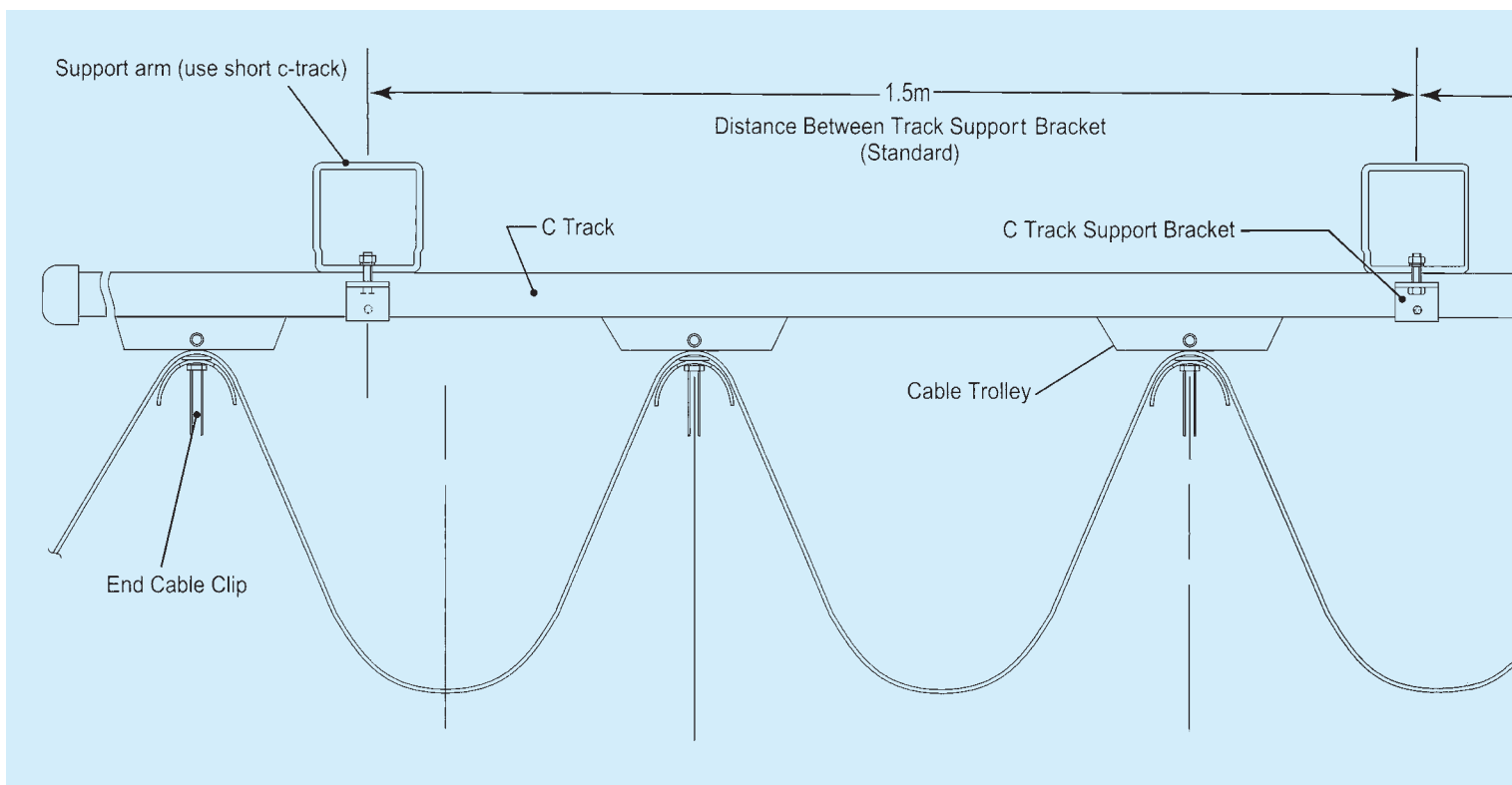
## **CABLE**

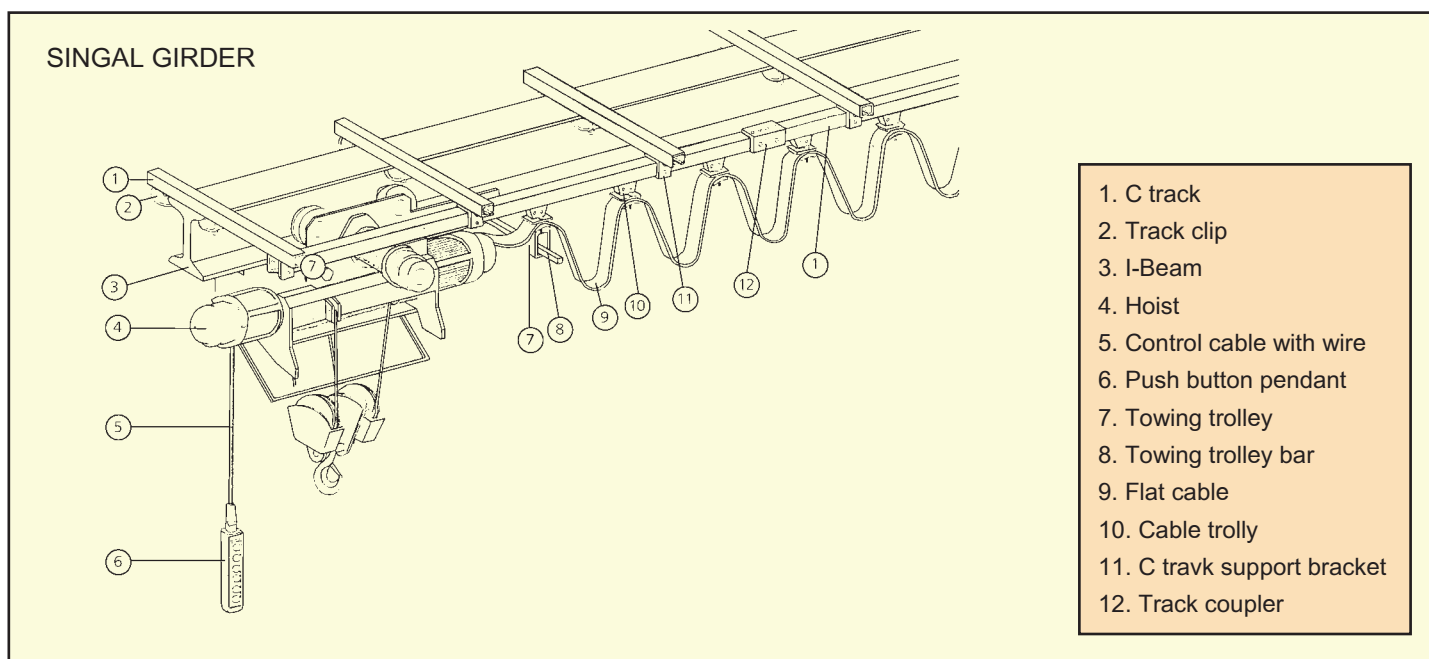
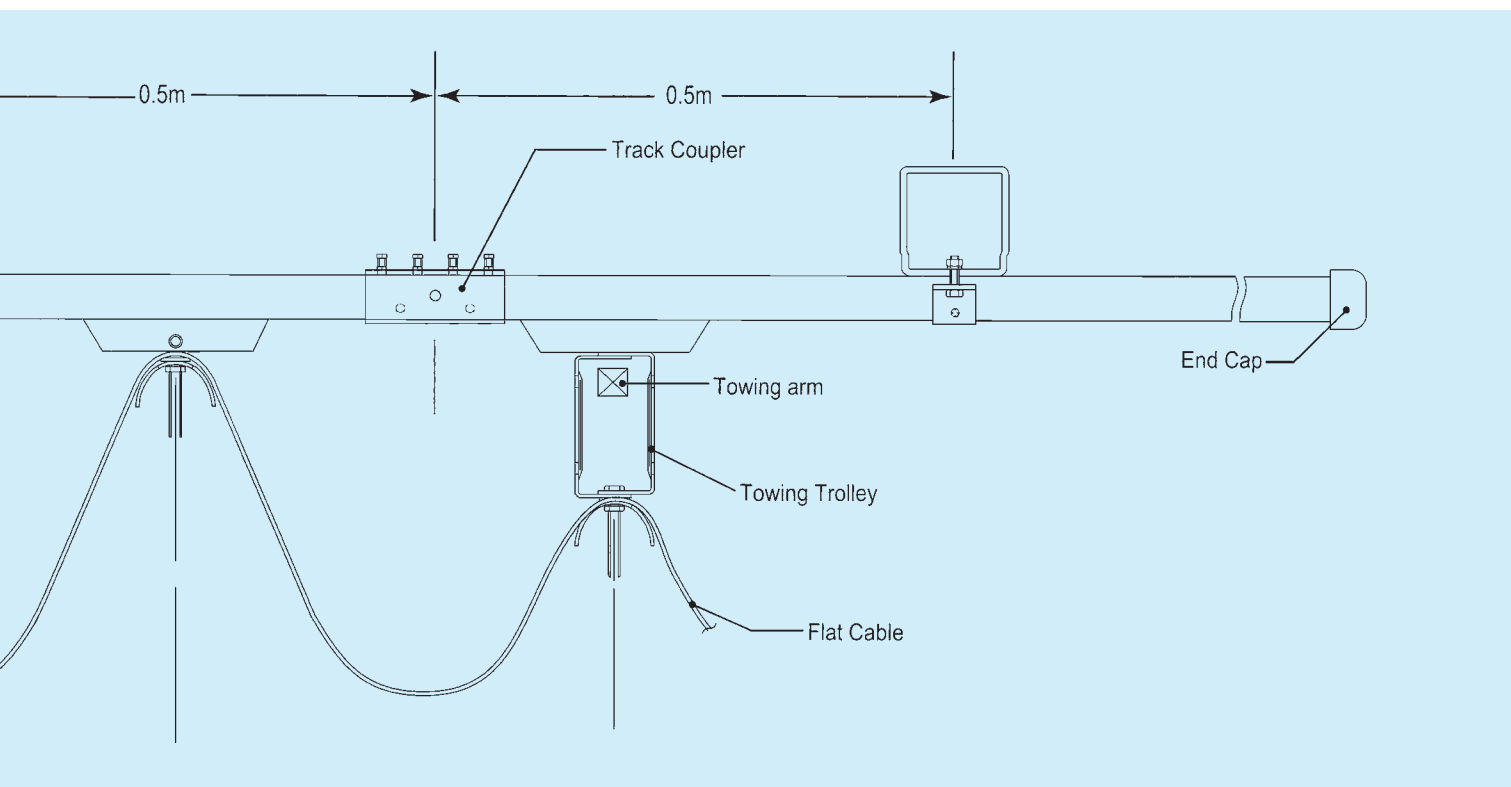
## **CABLE REELS**

## **KBK LIGHT RAIL SYSTEM**

# CABLE FESTOON SYSTEM

## C30 TYPE





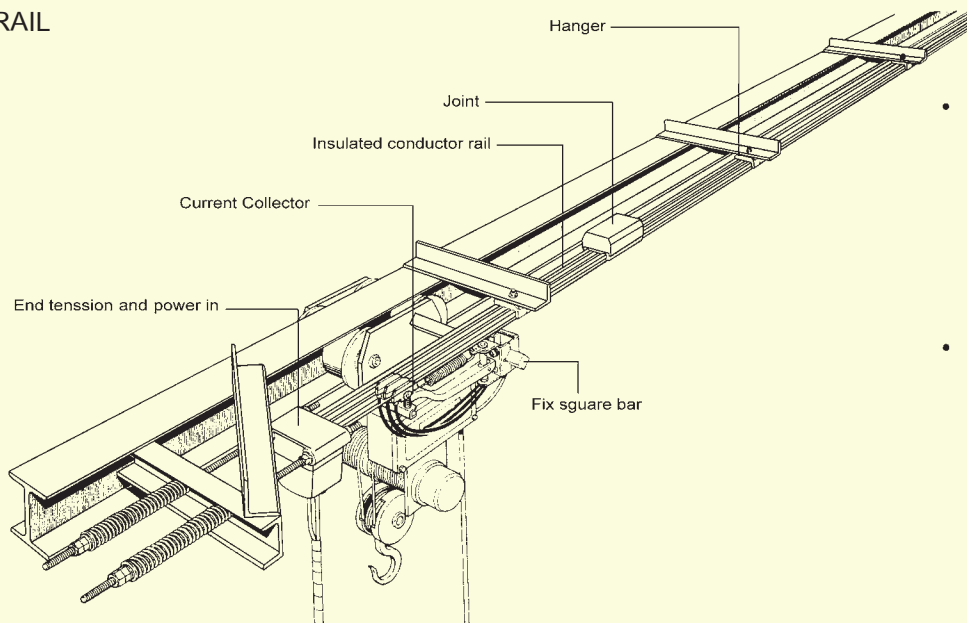


# SAFETY CONDUCTOR SYSTEM

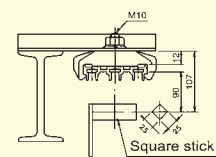
## MULTIPLE LEADS TYPE (INDOOR USE TYPE)

	Insulated Conductor Rail	
	KY-AN3007	3P 75A
	KY-AN3009	3P 90A
	KY-AN3015	3P 150A
	KY-AN3020	3P 200A
	KY-AN4007	4P 75A
	KY-AN4009	4P 90A
	KY-AN4020	4P 200A
	KY-AN6007	6P 75A
	KY-AN6009	6P 90A
	Hanger	
	KY-AN3100	3P 75A90A150A
	KY-AN3120	3P 200A
	KY-AN4100	4P 75A90A
	KY-AN4120	4P 200A
	KY-AN6100	6P 75A90A
	End Tension & Power In	
	KY-AN3200	3P 75A90A150A
	KY-AN3220	3P 200A
	KY-AN4200	4P 75A90A150A
	KY-AN4220	4P 200A
	KY-AN6200	6P 75A90A
	Current Collector	
	KY-AN3703	30A
	KY-AN3706	60A
	KY-AN3710	100A
	Current Collect (Twin Arms Type)	
	KY-AN3703D	30A x 2
	KY-AN3706D	60A x 2
	KY-AN3710D	100A x 2
	Joint	
	KY-AN3300	3P
	KY-AN6300	6P
	Current Collector Replace Parts	
	KZ-AN3703	30A
	KZ-AN3706	60A
	KZ-AN3710	100A
	Fix Square Bar	
	KY-AN3800	

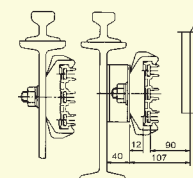
## MONO-RAIL



### • Standard installation

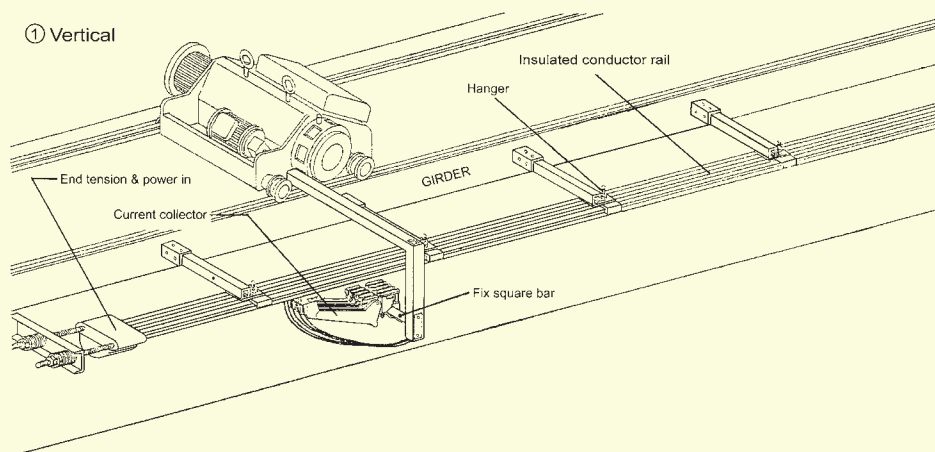


### • Lateral installation

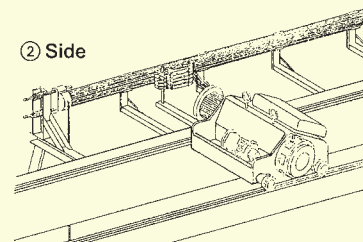


## DOUBLE GIRDER

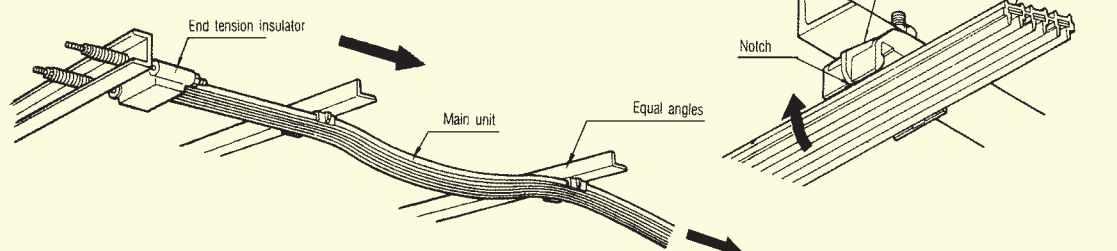
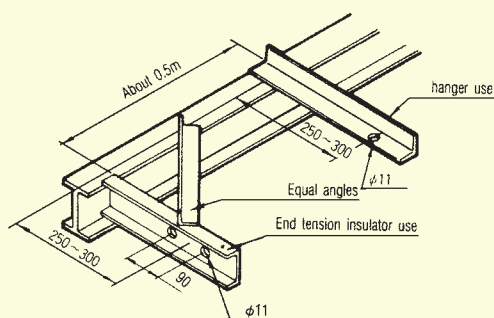
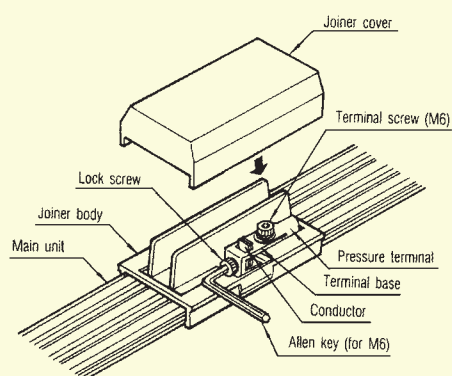
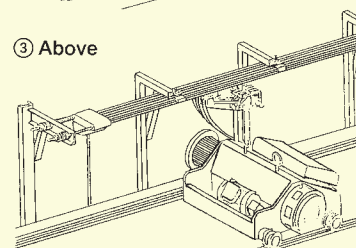
### ① Vertical



### ② Side










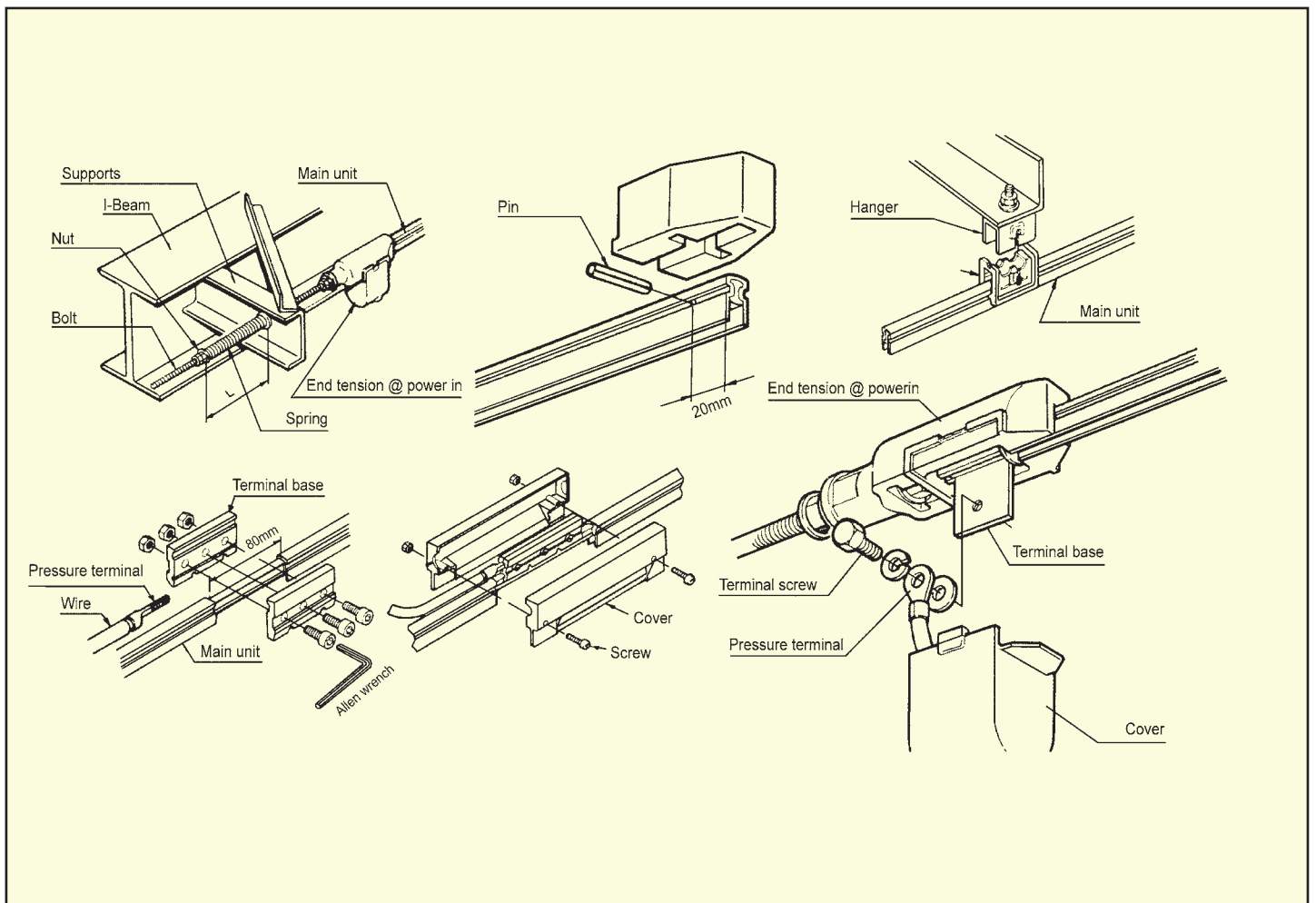
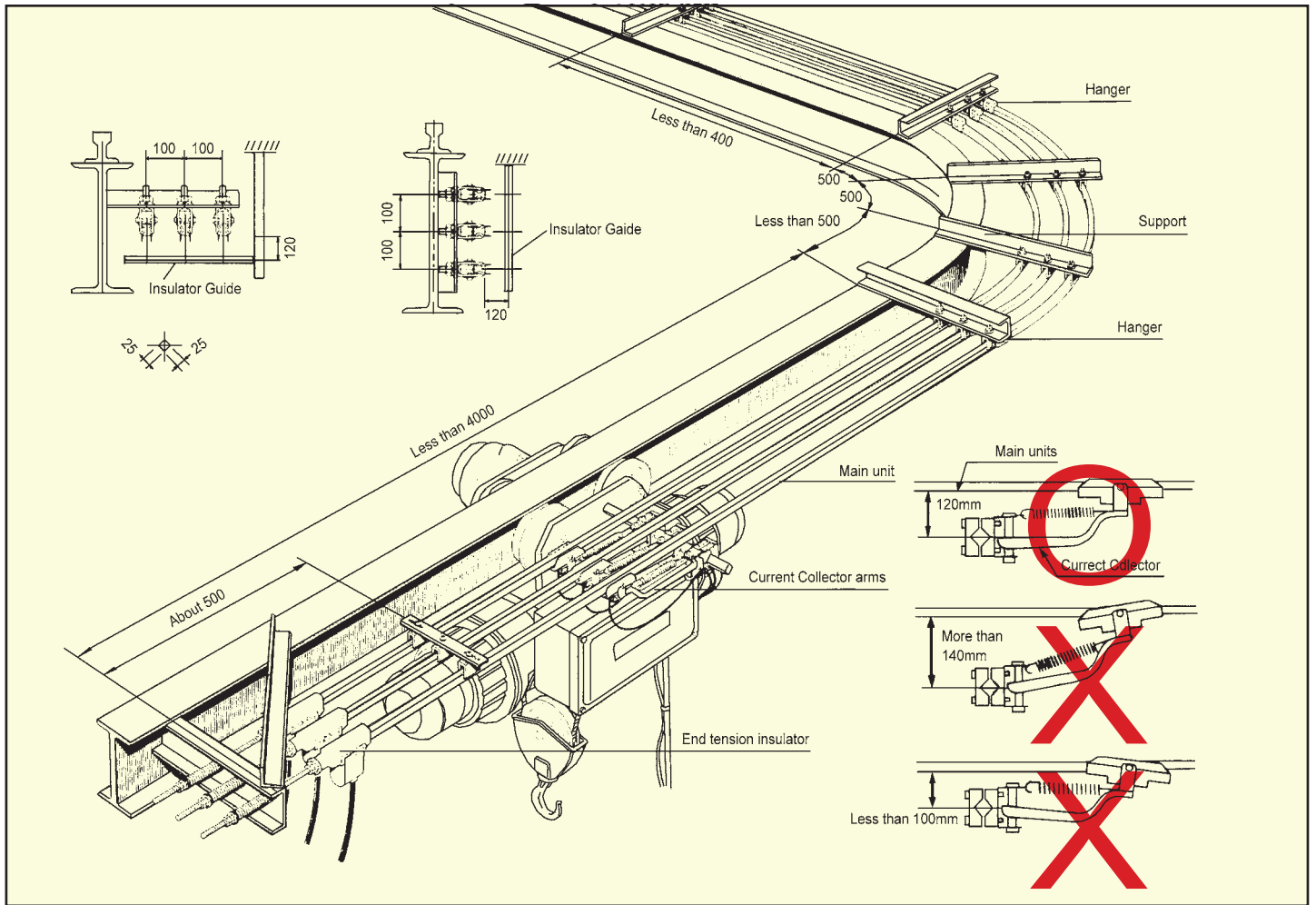
### ③ Above



# SAFETY CONDUCTOR SYSTEM

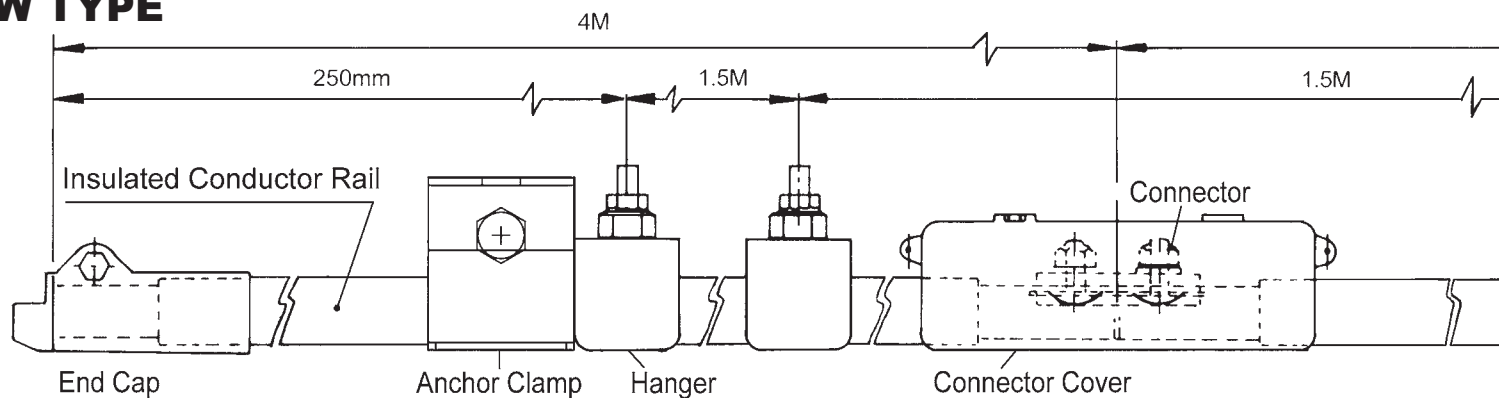
## I TYPE

	Insulated Conductor Rail	
	KY-AN1015	1P 150A
	Hanger	
	KY-AN1100	
	KY-AN1100S	Insulator type
	End Tension & Power In	
	KY-AN1200	
	Current Collector	
	KY-AN1704	40A
	KY-AN1710	100A
	Current Collector (Twin Arms Type)	
	KY-AN1704D	40A x 2
	KY-AN1710D	100A x 2
	Joint	
	KY-AN1300	
	Current Collector Replace Parts	
	KZ-AN1904	40A
	KZ-AN1910	100A
	Insulator Guide	
	KY-AN1838	380L
	KY-AN1850	500L



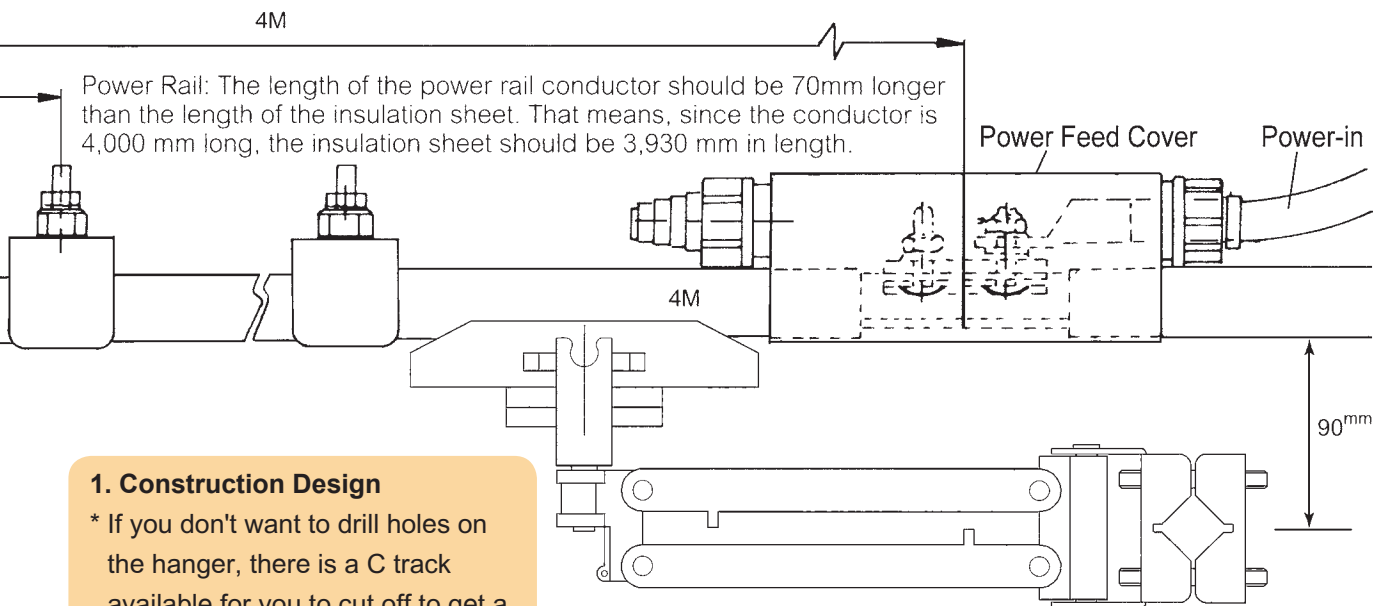
# SAFETY CONDUCTOR SYSTEM

## W TYPE



	320A	500A	800A
Insulated Conductor Rail 	KY-AW2030	KY-AW5050	KY-AW8080
Hanger Clamp 	KY-AW2100	KY-AW5100	KY-AW8100
End Cap 	KY-AW2200		
Connector 	KY-AW2300	KY-AW5300	KY-AW8300
Connector Cover 	KY-AW2400	KY-AW5400	KY-AW8400
Power Feed Cover 	KY-AW2500	KY-AW5500	KY-AW8500
Anchor Clamp 	KY-AW2600	KY-AW5600	KY-AW8600
Insulator Guide 	KY-AN1838	380mm	
	KY-AN1850	500mm	
Current Collector 	KY-AW2706	60A	
	KY-AW2710	100A	
	KY-AW2720	200A	
	KY-AW2725	250A	

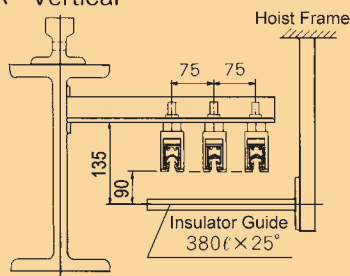




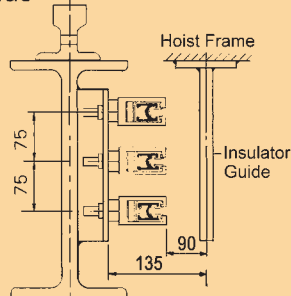
## 1. Construction Design

- \* If you don't want to drill holes on the hanger, there is a C track available for you to cut off to get a portion. Attach the nut and tighten the hexagonal set, then you may fasten the thing.

A \ Vertical

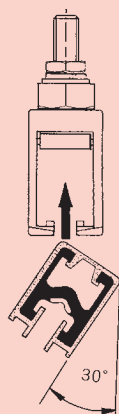


B \ Side



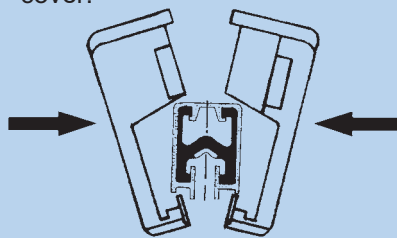
## 2. Hanger Clamp Installation Diagram

- \* Insert the power rail into the opening of the hanger clamp in an obliqueness of 30 degrees, then the power rail can be hold by the clamp.



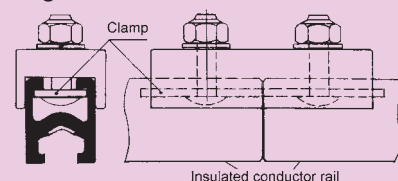
## 3. Connector Cover and Power Feed Cover installation Diagram

- \* Connector cover: Open the cover, hook the scoop slot from bottom to top in 30 degrees and combine them together.
- \* Power feed cover: loosen the plastic nut, take the plastic cap off and cut it for a proper aperture for piercing through the transmission line, tighten it, then close the cover.



## 5. Connector Installation Diagram

- \* Loosen the loose-resistant nut on the joint, plug it to the scoop slot on top of power rail conductor according to the "1" type guide base, then tighten the two units together.

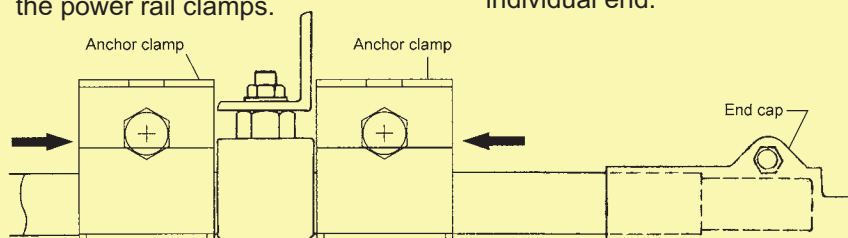


## 6. Towing Arm and Current Collector Installation Diagram

- \* As shown at the above diagram, 90mm.
- \* Put the collector parallelly with the power rail, and fasten it on the insulator guide.

## 4. Anchor Clamp Installation Diagram

- \* The positioning clamp is for tightening from inside and outside the power rail clamp for each power rail circuit to protect the power rail from moving in between the power rail clamps.



## 7. End cap Installation Diagram

- \* Insert the end cap to the end of the power rail conductor, knock twice will be OK. The end of the power rail conductor should be 35mm longer than the insulating plastics.
- \* There should be one at each individual end.

# PUSH BUTTON PENDANT STATION

## IP65 WATERPROOF



### Features

THAC's complete line of push-button pendant stations are ergonomically designed for single hand operation featuring minimal-force push-buttons to significantly minimize operator fatigue while maximizing control. THAC's 2-12 button pendants features high-impact resistant 2-piece enclosure to simplify field wiring. In addition, they are IP65 (NEMA 4) water-tight and resistant to impact and chemicals to withstand the most rugged environments. Enclosure is double insulated to with standard voltage to 2500V and safety yellow for high visibility. Button's mechanical design lives more than 1,000,000 cycles and operating temperature is -15°C~70 °C. Buttons are made by neoprene boots, which provide flexibility and durability and effectively seal out dirt and moisture. Contacts rated 5A at 250 VAC.

### Indirect Multi-functional Type

Model	Button Hole	Button Function							
		Operate		Directional					
				UP	DOWN	EAST	WEST	SOUTH	NORTH
COB-802S	2	x	x	S	S	x	x	x	x
COB-81S	2	x	x	S	S	x	x	x	x
COB-82S	4	x	x	S	S	S	S	x	x
COB-83S	6	x	x	S	S	S	S	S	S
COB-84SA	8	ON	OFF	S	S	S	S	S	S
COB-81D	2	x	x	D	D	x	x	x	x
COB-82D	4	x	x	D	D	D	D	x	x
COB-83D	6	x	x	D	D	D	D	D	D
COB-803SE	3	EMS	x	S	S	x	x	x	x
COB-83SE	6	EMS	O	S	S	S	S	x	x
COB-84SE	8	EMS	O	S	S	S	S	S	S
COB-803DE	3	EMS	x	D	D	x	x	x	x
COB-83DE	6	EMS	O	D	D	D	D	x	x
COB-84DE	8	EMS	O	D	D	D	D	D	D

\* EMS: Red mushroom type Emergency stop.

\* ON/OFF: Power On / Power off.

\* O: Option. (Lamp, switch or On/Off....etc. Please contact THAC.)

\* S: 1-step, D: 2-step.

\* Above is standard, special specification is available by buyer please contact THAC or a THAC distributor.

# CABLE

## Round Cable

Section (mm <sup>2</sup> )	0.3	0.5	0.75	1.25	2	3.5	5.5
Conductor (No./mm)	12/0.18	12/0.18	30/0.18	50/0.18	37/0.20	44/0.32	69/0.32
2C	v	v	v	v	v	v	v
3C	v	v	v	v	v	v	v
4C	v	v	v	v	v	v	v
5C	v	v	v	v	v	v	v
6C	v	v	v	v	v	v	v
7C	v	v	v	v	v	v	v
8C	v	v	v	v	v	v	v
9C					v		
10C	v	v	v	v	v	v	v
12C	v	v	v	v	v	v	v
14C	v	v	v	v	v		
16C	v	v	v	v	v	v	v
18C			v				
20C	v	v	v	v	v	v	v
24C	v	v	v	v	v	v	v
30C	v	v	v	v	v	v	v
36C	v	v	v	v	v	v	v
40C	v	v	v	v	v	v	v
50C	v	v	v	v	v	v	v
60C	v	v	v	v	v	v	v
100C	v	v	v	v	v		

## Flat Cable

Section(mm <sup>2</sup> )	1.25	2	3.5	5.5	8	14	22	38
Conductor(No./mm)	50/0.18	37/0.26	140/0.18	217/0.18	315/0.18	550/0.18	865/0.18	716/0.18
3C	v	v	v	v	v	v	v	v
4C	v	v	v	v	v	v	v	v
5C	v							
8C	v	v	v					
10C	v	v						
13C	v							
16C	v	v						

## Round Cable with Strainer Cord

Section (mm <sup>2</sup> )	1.25
Conductor (No./mm)	50/0.18
3C	v
4C	v
5C	v
6C	v
8C	v
10C	v
14C	v
16C	v

## Compound Cable

1	3.5 mm <sup>2</sup> x 3C + 2 mm <sup>2</sup> x 3C
2	3.5 mm <sup>2</sup> x 3C + 2 mm <sup>2</sup> x 4C
3	5.5 mm <sup>2</sup> x 3C + 2 mm <sup>2</sup> x 4C

\* Above is standard, special specification is available by buyer please contact THAC or a THAC distributor.



# F24 Series Radio Remote Controller



## Reliable - High Performance - Economic

- Durable nylon-fiber housing for extra shock resistance
- Low power consumption with 2 AA batteries (last up to 2 months in normal operation)
- Operating range up to 100 meters
- Programmable function setting through Windows-based software
- Economic efficiency, ease of operation
- Pre-wiring standard cable making wiring procedures easier
- 100% compatible components reducing stock of spare part
- Safety features: 4.3 billion unique ID code  
Hamming code  
Enhanced watch-dog circuit

Model	Motion	EMS	Start	Switch
F24-6S	6 X Single Speed	O	O	O
F24-6D	6 X Double Speed	O	O	O
F24-8S	8 X Single Speed	O	O	O
F24-8D	8 X Double Speed	O	O	O
F24-10S	10 X Single Spee	O	O	O
F24-10D	10 X Double Speed	O	O	O
F24-12S	12 X Single Speed	O	O	O
F24-12D	12 X Double Speed	O	O	O

\*EMS:Emergency Stop

Radio Control System best for Crane/mobile/forestry application/lift equipment

## General Specification

Operating Temp	-35°C ~ +80°C
Operating Range	100 M
Transmitter power supply	4 AA size Alkaline / Rechargeable Battery
Receiver power supply	AC 48/110/220/380 V
Protection class	IP 65 Industrial standard
ID Code	4.3 billion (32 bit)
Hamming distance	≥ 4
TX Dimension & Weight	220 x 110 x 90 mm Apprx.860g(w/o batteries)
RX Dimension & Weight	290 x 230 x 70 mm Apprx.2200g(w/o cable)

## Optional Accessories



CD Software  
& Program Cable



Copier



Transmitter  
Protective Cover



Passive Antenna



# F24-60

## Joystick Controller

### Double Joystick with 5 steps

### Reliable - High Performance - Economic

F24-60 series is particular suitable for control of Tower Cranes, Overhead Cranes and Concrete Pumps. This particular model is equipped with most sophisticated safety features for making the entire operation safe.



### Features

- Fully programmable relay configuration with maximum 16 relays output per command. (NO extra extension unit required)
- Durable nylon-fiber housing for extra shock resistance.
- Operating range up to 100 meters.
- Pre-wiring standard cable making installation quick and easy.
- New waist belt provide maximum comfort for operator (Optional)
- 3 stages LED battery power indicator
- Acceleration delay time control (Providing smooth moving for multiple speeds cranes)
- Safety features:
  - ▶ 4.3 billion unique ID code
  - ▶ Hamming code
  - ▶ Enhanced Watch-Dog circuit



### Transmitter

- Double Joystick/ 6 Single step buttons (Including start button)
- 1 Emergency button (EMS)
- 1 Rotary key switch
- 4 selector switches

### Receiver

- Max. 40 relay output (Programmable)
- NC/NO relay (optional)
- External passive antenna (optional)

### General Specification

Operating Temp	-35°C ~ +80°C
Operating Range	100 M
Transmitter power supply	4 AA size Alkaline / Rechargeable Battery
Receiver power supply	AC 48/110/220/380 V
Protection class	IP 65 Industrial standard
ID Code	4.3 billion (32 bit)
Hamming distance	≥ 4
TX Dimension & Weight	220 x 110 x 90 mm Apprx.860g(w/o batteries)
RX Dimension & Weight	290 x 230 x 70 mm Apprx.2200g(w/o cable)

### F24-60 Accessories



CD Software  
& Program Cable



Copier



Battery Charger



Passive Antenna



Waist belt

# CABLE REELS



## KCRS Spring Operated Cable Reels

MODEL	KCRS 1	KCRS 11	KCRS 2W	KCRS 3W	KCRS 4W	KCRS 4F	KCRS 5F	KCRS 5T
Input hole dia. (mm)	14	13	13	13	22	22	26	26
Turns (circle)	15	13	22	35	25	50	50	35
Max. reel torque (kgf • m)	0.16	0.3	0.86	0.4	1.06	1.06	1.76	30
Cable type	2mm <sup>2</sup> x3C	2mm <sup>2</sup> x3C	3.5mm <sup>2</sup> x3C	3.5mm <sup>2</sup> x3C	8mm <sup>2</sup> x3C	8mm <sup>2</sup> x3C	8mm <sup>2</sup> x3C	14mm <sup>2</sup> x3C
Max. length of cable (M)	10	13	18	25	18	38	48	26
Max. amp of cable	15	15	30	30	40	40	40	60
Max. pole of cable	8	8	12	12	16	16	16	16

## KCRM Motorized Cable Reels

### T20 type

	Cable Reel Model						
	50m	60m	70m	80m	90m	100m	110m
14mm <sup>2</sup> x 3C	T20H-0514	T20H-0714					T20H-0914
14mm <sup>2</sup> x 4C	T20H-0714				T20H-0914		
22mm <sup>2</sup> x 3C	T20H-1322						T20H-1822
22mm <sup>2</sup> x 4C	T20H-1322						-
38mm <sup>2</sup> x 3C	T20H-1338				T20H-1838		-
38mm <sup>2</sup> x 4C	T20H-1388				T20H-1838		-

### T20.1 type / T40 type

Cable	Cable Reel Model					
	50~70m	80~90m	100m	110m	120~140m	150~160m
22mm <sup>2</sup> x 3C	-	-	-	-	T20.1H-1822	T40M-1822
38mm <sup>2</sup> x 3C	-	-	-	T40M-1838	T40M-2038	-
60mm <sup>2</sup> x 3C	T20.1H-1560	T40M-1860	T40M-2060	T40M-2060	T40M-2060	-
100mm <sup>2</sup> x 3C	T40-2099	-	-	-	-	-

### T20.1 type / T40 type

Model	Max. dia. of Cable	Max. Length of Cable
KCRM-M50	60mm <sup>2</sup>	200m
	100mm <sup>2</sup>	100m

### M10 type / M15 type

Model	Max. pole of cable	Max. dia. of Cable	Max. Length of Cable
KCRM-M10S-0505~0814	15	5.5mm <sup>2</sup> ~14mm <sup>2</sup>	50m~100m
KCRM-M10S-0705~0514	15		
KCRM-M15S-0905~0914	20		

### M30 type / M30.1 type

Model	Max. pole of cable	Max. dia. of Cable	Max. Length of Cable
KCRM-M30H-1314~1322	4	14mm <sup>2</sup> ~38mm <sup>2</sup>	50m~100m
KCRM-M30.1H-1322~1338			
KCRM-M30.1H-1838			

## Cable Reference Table

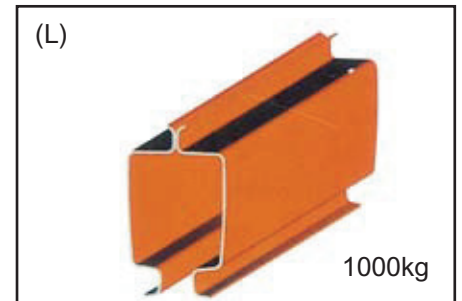
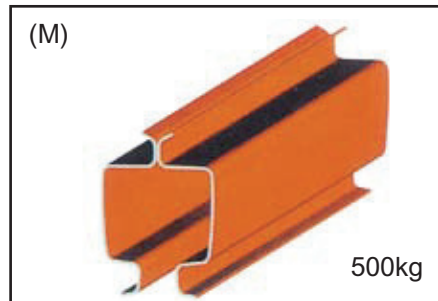
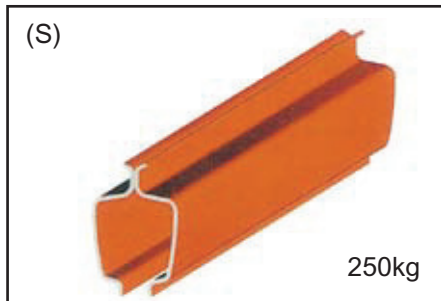
No. of Cord	Cord Dia. (mm)												
	1.25	20	3.5	5.5	8.0	14.0	22.0	30.0	38.0	50.0	60.0	80.0	100.0
	Cable O.D. (mm)												
3C	11.5	12.5	14.0	15.5	17.0	122.0	28.0	33.0	35.0	39.0	42.0	49.0	54.0
4C	13.0	13.5	15.5	17.5	19.0	25.0	31.0	36.0	39.0	43.0	47.0	55.0	60.0



# KBK Light Rail System

Lightweight and modular design let system to be installed, disassembled, moved and reinstalled easily and quickly. Various flexibility against building obstruction. Easy operation, easy for expansion and codification of existing line, noise free during operation. Suitable for power, air supply system and can be used in suspension crane, jib crane, automobile assembly plant, domestic factory or C track festoon cable rails. Capacity: 250~1000kg.

Capacity : 250~1000kg



ELECTRIC APPLIANCE PRODUCE LINE



SINGLE GIRDER WITH EXTEND ARM



SINGLR GIRDER COMBINE WITH  
3 RUNWAY GIRDER



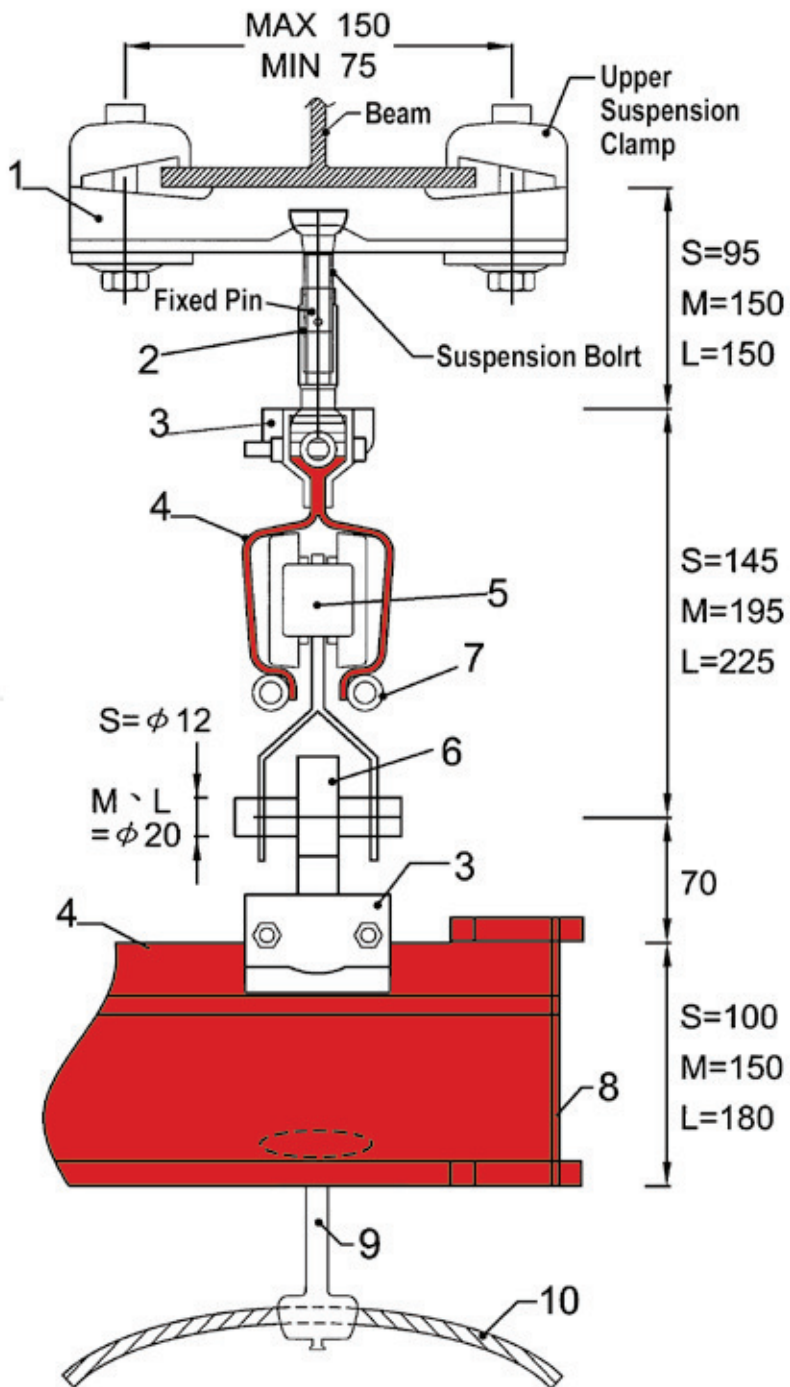
MOBIL ASSEMBLY LINE



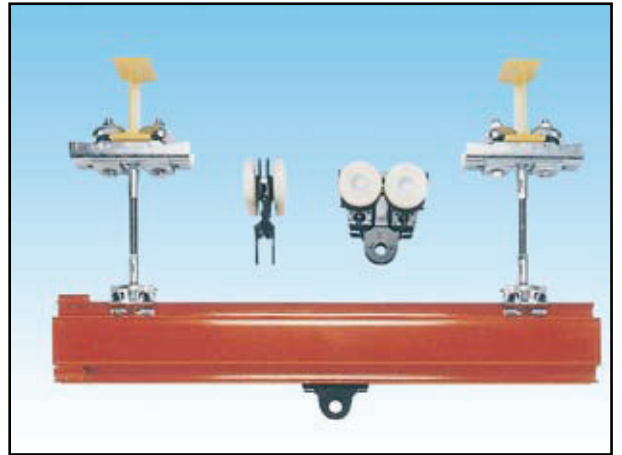
SINGLR GIRDER COMBINE WITH JIG



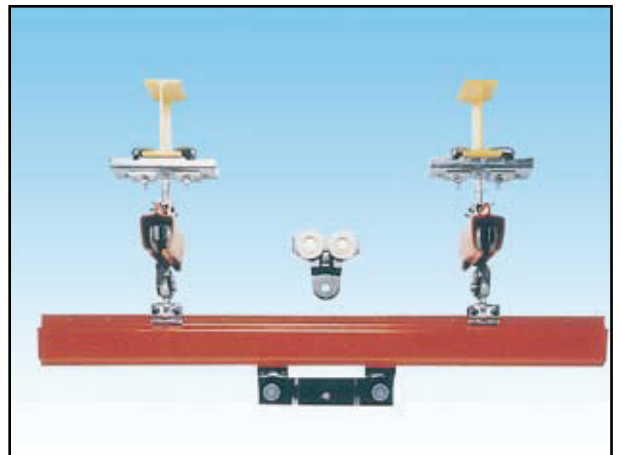
## KBK Arrangements



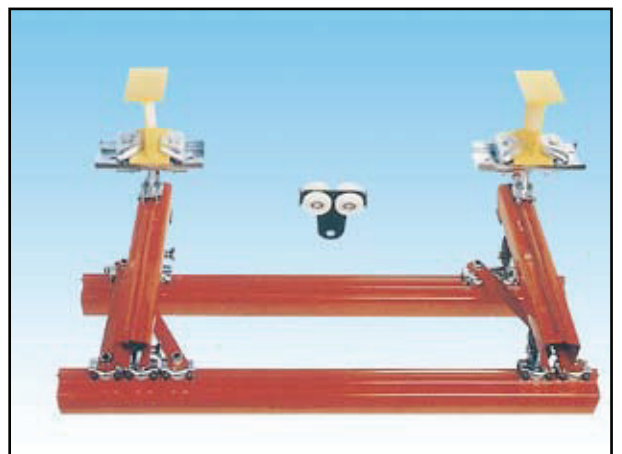
## KBK Assembly Type



▲ Mono-Rail Type

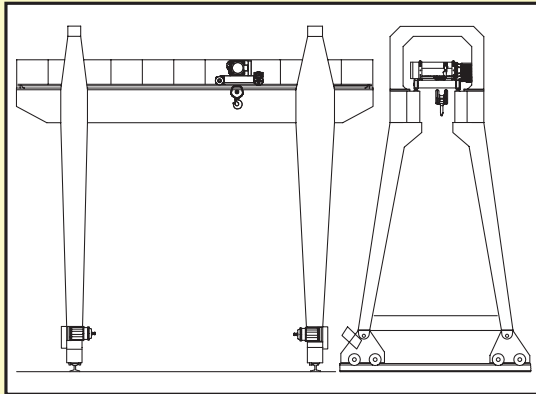


▲ Single-Girder Type

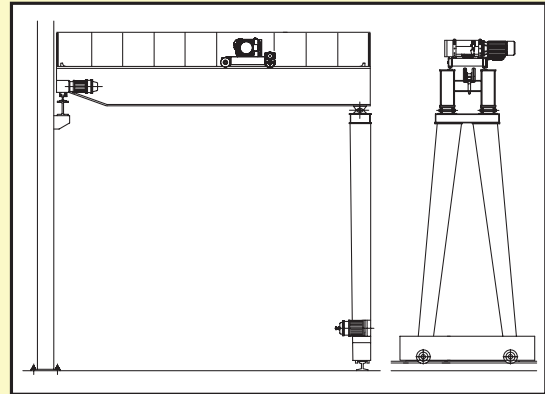


▲ Double-Girder Type

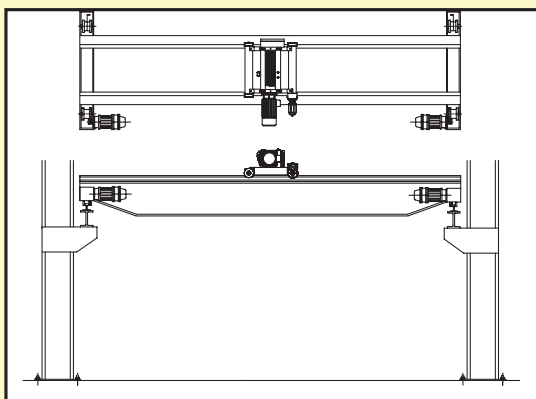
## Application of hoists



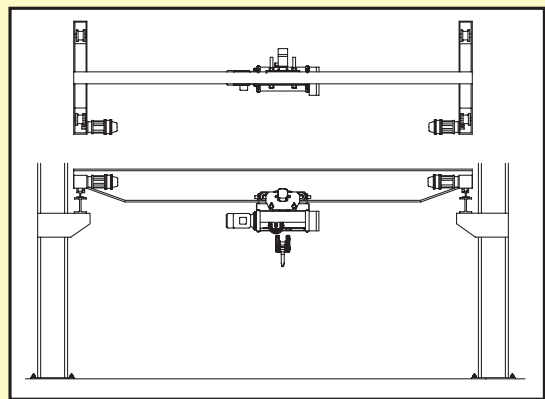
**Gantry Crane**



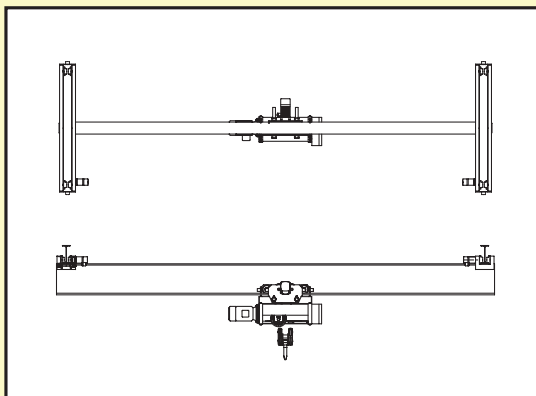
**Semi-Gantry Crane**



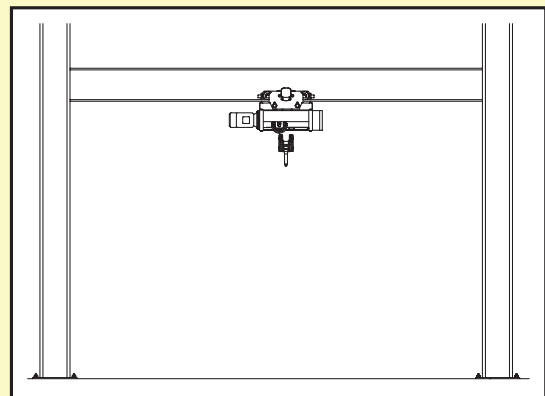
**Double-Girder E.O.T. Crane**



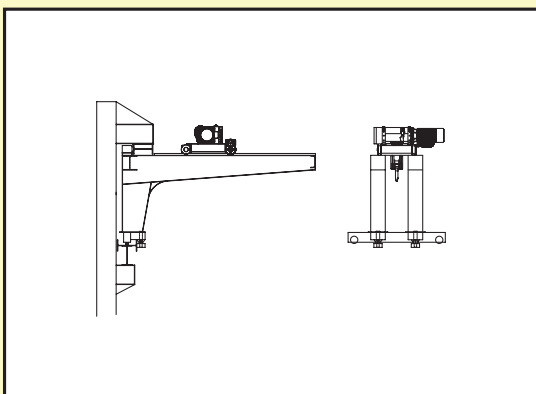
**Single-Girder E.O.T. Crane**



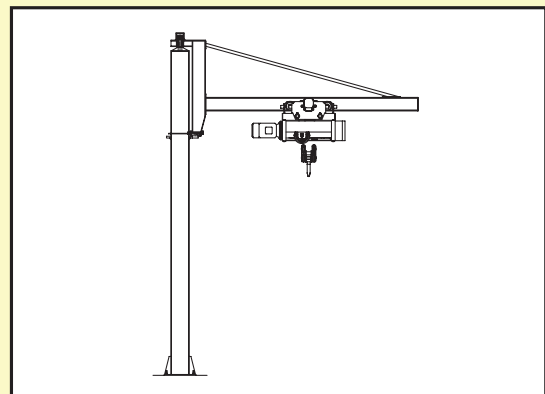
**Underhug Crane**



**Mono-rail Hoist**



**Wall Crane**



**Jib Crane**

# Would you like a proposal for a THAC wire rope hoist ?

## Just fill in page for a fast response.

All members of our staff will be pleased to respond to telephone enquiries, to provide expert advice and to arrange for a visit by field staff, if necessary.

Can you already state some specific data? Then all you need to do is to copy this page, fill in data available and send it to our

### INQUIRE

Taiwan Fax:  
+886-2-22996138  
Bangkok Fax:  
+66-2718-9709

Company: \_\_\_\_\_ Name: \_\_\_\_\_

Address: \_\_\_\_\_ Phone no: \_\_\_\_\_

E-mail: \_\_\_\_\_ Fax no: \_\_\_\_\_

Crane type (see page 20): \_\_\_\_\_

☐ Indoor use ☐ Outdoor use

☐ Fixed type ☐ Mono-rail hoist ☐ Double-rail hoist

Load capacity: \_\_\_\_\_ ton

Lifting speed:

☐ Single-speed \_\_\_\_\_ m/min or ☐ maker's standard

☐ Two-speed \_\_\_\_\_ m/min or ☐ maker's standard

Duty: \_\_\_\_\_ %ED

Lifting height: \_\_\_\_\_ m

Cross travel:

☐ Single-speed \_\_\_\_\_ m/min or ☐ maker's standard

☐ Two-speed \_\_\_\_\_ m/min or ☐ maker's standard

Power source: \_\_\_\_\_ V \_\_\_\_\_ Hz

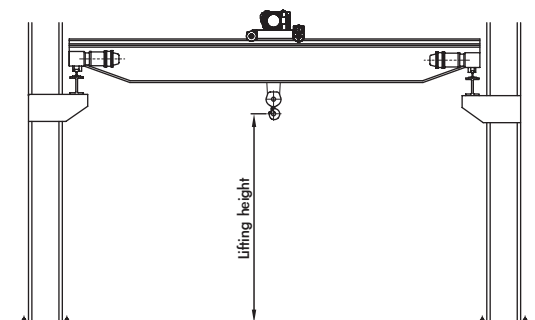
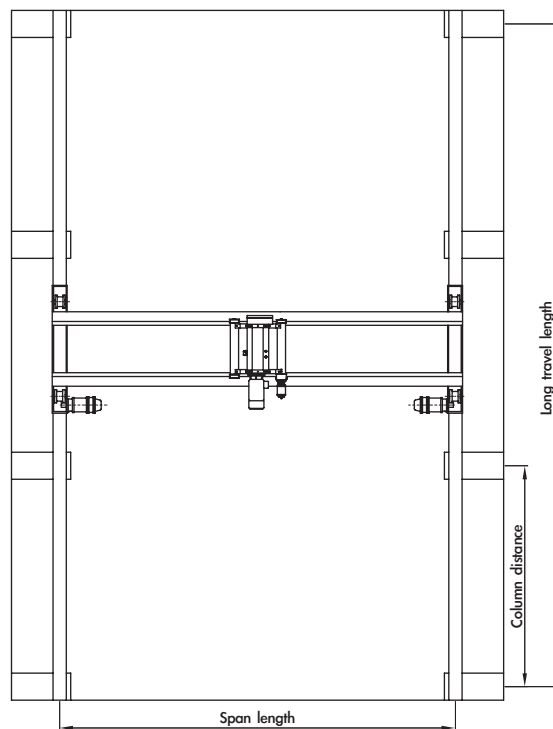
Span length: \_\_\_\_\_ m

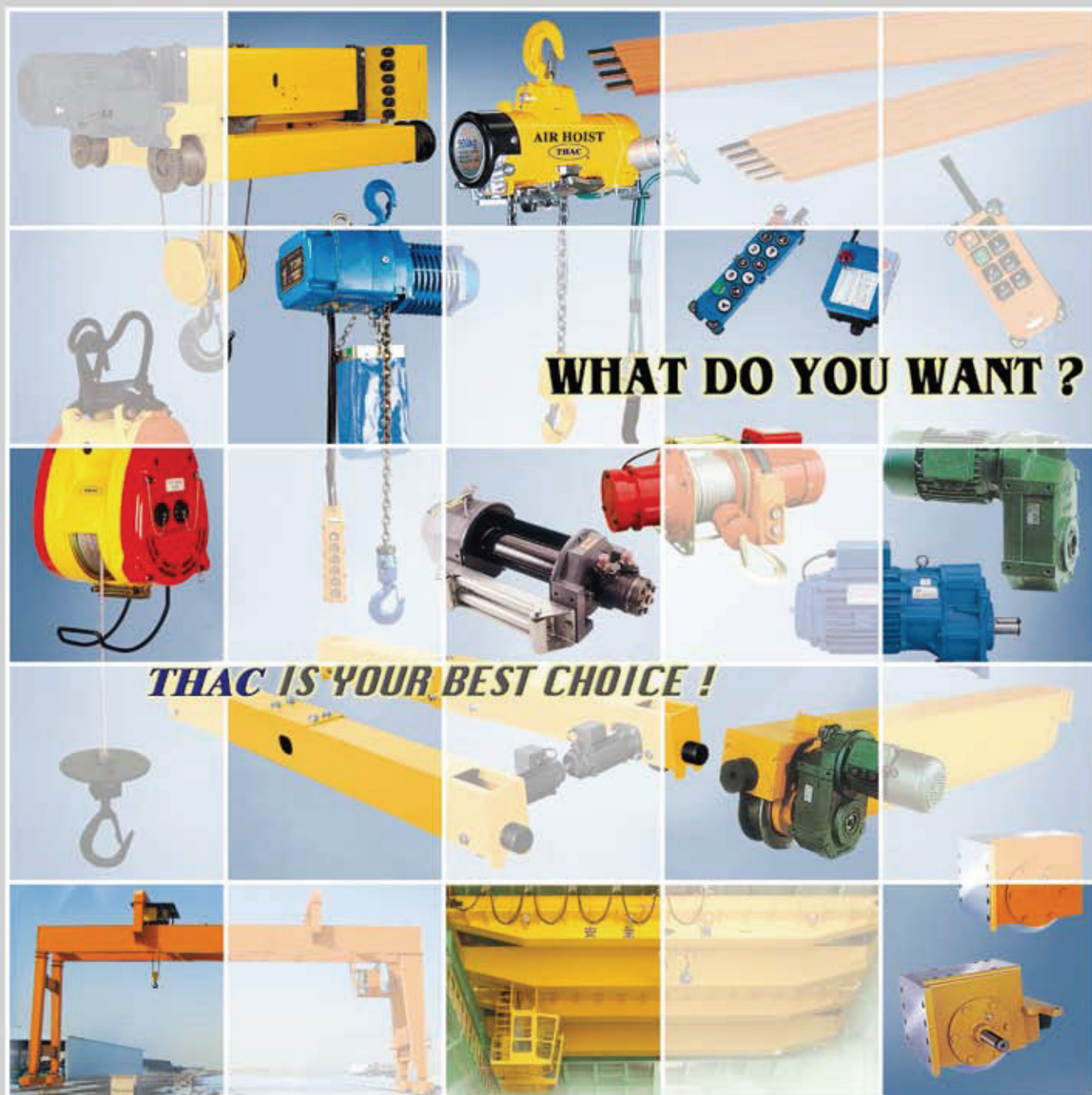
Long travel length: \_\_\_\_\_ m

Long travel speed:

☐ Single-speed \_\_\_\_\_ m/min or ☐ maker's standard

☐ Two-speed \_\_\_\_\_ m/min or ☐ maker's standard





### **WARNING:**

The equipment shown in this catalogue is intended for industrial use only and should not be used to lift, support, or otherwise transport people, or to suspend loads over people.



### **TAIWAN HOIST AND CRANE CO., LTD.**

8F-9, NO.3, WUCHUAN 1ST ROAD,  
SHINJUANG CITY, TAIPEI, TAIWAN 248, R.O.C.  
Tel: +886-2-2299-6088 Fax: +886-2-2299-6138  
E-mail: thac@taiwanhoist.com.tw  
http: //www.taiwanhoist.com.tw

### **BRANCH:**

### **TAIWAN HOIST AND CRANE (THAILAND) CO., LTD.**

28/2 SOI 45 RAMA 9 RD.,  
SUANLUANG, BANGKOK 10250, THAILAND  
Tel: 0-2720-1035-6 Fax: 0-2718-9709

### **Distributed By:**