



PARALLEL SHAFT GEAR MOTOR

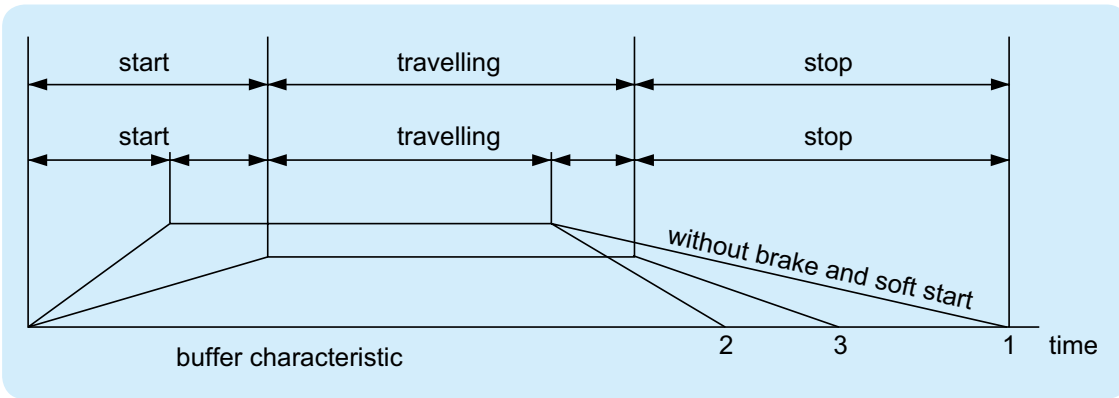


HM SERIES

CONTENTS

SPEED & CHARACTERISTICS FOR MOTOR	1
HM - A.....	2
HM - B	3
HM - C	4
HM - D	5
HM - E	6
HM - F.....	7
EXPLODED VIEW.....	8

Speed

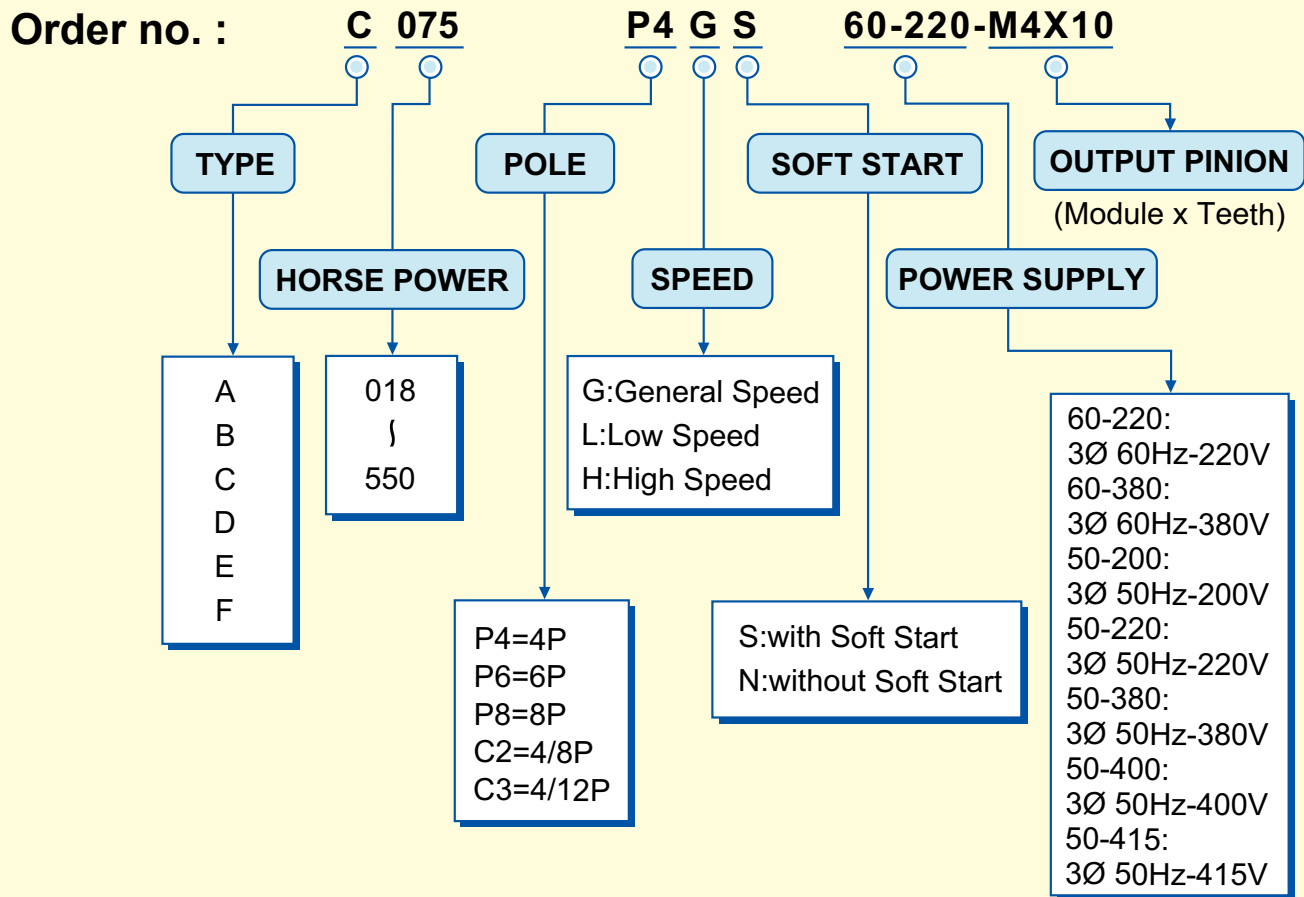


1. Without Brake and Soft Start
2. With Brake Without Soft Start
3. With Brake and Soft Start

Characteristics

1. Light weight and good looking : The motor case is made by aluminum alloy with good thermal diffusivity and aesthetic out-looking.
2. Precision gear : The gear is made by steel alloy, with quench and grinding processed,moves quietly.
3. Buffer : The buffer can make the speed reducer operate without strong impact thus increase its service life.
4. IP55 motor : High starting torque, good thermal diffusivity, small size, low current, and high durability.
5. Electro-magnetic brake : The driving force of the direct type electro-magnetic brake can be easily adjusted.

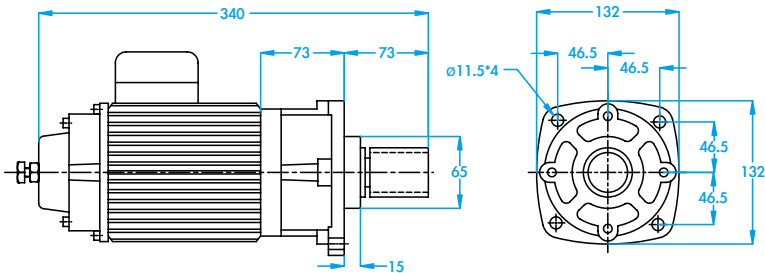
Ordering example: C075 P4GS 60-220-M4X10



(440V~600V special order by customer's request)

- With : 1. Fix plate
- 2. Screw
- 3. Pinion

DIMENSION :



OUTPUT PINION :

MODULE	Number of Gear Teeth (Seperated Pinion)
M3	12T 14T 15T
M3.5	10T 11T 12T 13T
M4	10T

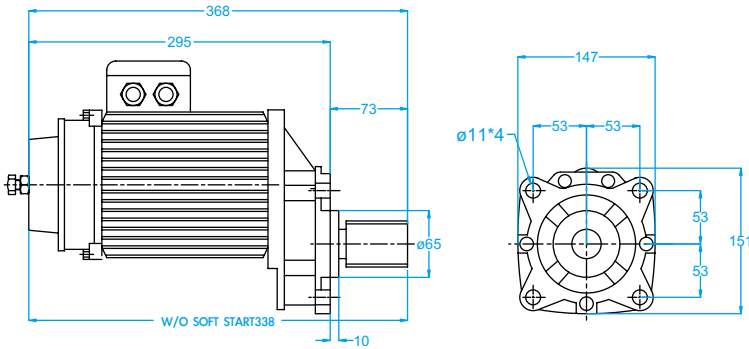
SPECIFICATION :

TYPE	Power KW	Pole P	VOLTAGE	RATIO	Output Speed (RPM)		MODULE	WEIGHT
					50HZ	60HZ		
A018P8LS	0.18	8	220-440	10	75	90	M3 M3.5 M4	15.5
A018P8LN	0.18	8	220-440	10	75	90	M3 M3.5 M4	13
A025P4LS	0.25	4	220-440	10	150	180	M3 M3.5 M4	14.5
A025P4LN	0.25	4	220-440	10	150	180	M3 M3.5 M4	12
A025P6LS	0.25	6	220-440	10	100	120	M3 M3.5 M4	15.5
A025P6LN	0.25	6	220-440	10	100	120	M3 M3.5 M4	13
A037P4LS	0.375	4	220-440	10	150	180	M3 M3.5 M4	15.5
A037P4LN	0.375	4	220-440	10	150	180	M3 M3.5 M4	13

TYPE	Power KW	Pole P	VOLTAGE	RATIO	Output Speed (RPM)		MODULE	WEIGHT
					50HZ	60HZ		
A018P8HS	0.18	8	220-440	7.8	96	115	M3 M3.5 M4	15.5
A018P8HN	0.18	8	220-440	7.8	96	115	M3 M3.5 M4	13
A025P4HS	0.25	4	220-440	7.8	183	230	M3 M3.5 M4	14.5
A025P4HN	0.25	4	220-440	7.8	183	230	M3 M3.5 M4	12
A025P6HS	0.25	6	220-440	7.8	128	153	M3 M3.5 M4	15.5
A025P6HN	0.25	6	220-440	7.8	128	153	M3 M3.5 M4	13
A037P4HS	0.375	4	220-440	7.8	183	230	M3 M3.5 M4	15.5
A037P4HN	0.375	4	220-440	7.8	183	230	M3 M3.5 M4	13

- With : 1. Fix plate
- 2. Screw
- 3. Pinion

DIMENSION :



OUTPUT PINION :

MODULE	Number of Gear Teeth (Seperated Pinion)
M3	12T 13T 14T 15T 16T 17T 18T
M3.5	9T 10T 11T 12T 13T 14T 15T
M4	9T 10T 11T 12T 13T

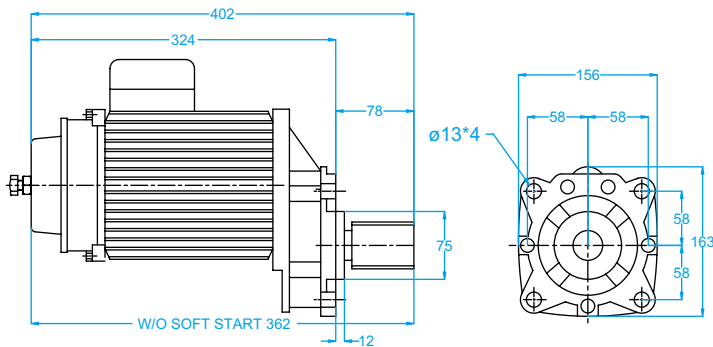
SPECIFICATION :

TYPE	Power	Pole	VOLTAGE	RATIO	Output Speed (RPM)		MODULE	WEIGHT
	KW	P			50HZ	60HZ		
B020P8GS	0.2	8	220-600	8.5	88	105	M3 M3.5 M4	21.5
B020P8GN	0.2	8	220-600	8.5	88	105	M3 M3.5 M4	17.5
B030P6GS	0.3	6	220-600	8.5	118	141	M3 M3.5 M4	21.5
B030P6GN	0.3	6	220-600	8.5	118	141	M3 M3.5 M4	17.5
B040P4GS	0.4	4	220-600	8.5	176	211	M3 M3.5 M4	21.5
B040P4GN	0.4	4	220-600	8.5	176	211	M3 M3.5 M4	17.5
B020C3GS	0.2/0.07	4/12	220-600	8.5	176/59	211/70	M3 M3.5 M4	21.5
B020C3GN	0.2/0.07	4/12	220-600	8.5	176/59	211/70	M3 M3.5 M4	17.5
B020C2GS	0.2/0.1	4/8	220-600	8.5	176/88	211/105	M3 M3.5 M4	21.5
B020C2GN	0.2/0.1	4/8	220-600	8.5	176/88	211/105	M3 M3.5 M4	17.5
B040C3GS	0.4/0.13	4/12	220-600	8.5	176/59	211/32	M3 M3.5 M4	22.5
B040C3GN	0.4/0.13	4/12	220-600	8.5	176/59	211/32	M3 M3.5 M4	18.5
B040C2GS	0.4/0.2	4/8	220-600	8.5	176/88	211/105	M3 M3.5 M4	22.5
B040C2GN	0.4/0.2	4/8	220-600	8.5	176/88	211/105	M3 M3.5 M4	18.5



- With : 1. Fix plate
- 2. Screw
- 3. Pinion

DIMENSION :



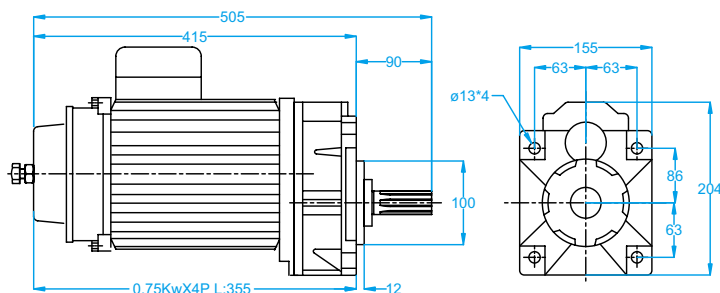
OUTPUT PINION :

MODULE	Number of Gear Teeth (Seperated Pinion)
M3	16T 18T
M3.5	9T 10T 11T 12T 13T 14T 15T 16T
M4	9T 10T 11T 12T 13T
M5	7T 8T 9T 10T 11T 12T

SPECIFICATION :

TYPE	Power	Pole	VOLTAGE	RATIO	Output Speed (RPM)		MODULE	WEIGHT
	KW	P			50HZ	60HZ		
C040P8GS	0.38	8	220-600	7.7	96	115	M3 M3.5 M4 M5	27
C040P8GN	0.38	8	220-600	7.7	96	115	M3 M3.5 M4 M5	21
C055P8GS	0.55	8	220-600	7.7	96	115	M3 M3.5 M4 M5	31
C055P8GN	0.55	8	220-600	7.7	96	115	M3 M3.5 M4 M5	27
C060P6GS	0.6	6	220-600	7.7	128	153	M3 M3.5 M4 M5	27
C060P6GN	0.6	6	220-600	7.7	128	153	M3 M3.5 M4 M5	21
C075P4GS	0.75	4	220-600	7.7	192	230	M3 M3.5 M4 M5	27
C075P4GN	0.75	4	220-600	7.7	192	230	M3 M3.5 M4 M5	21
C075P6GS	0.75	6	220-600	7.7	128	153	M3 M3.5 M4 M5	31
C075P6GN	0.75	6	220-600	7.7	128	153	M3 M3.5 M4 M5	27
C110P4GS	1.1	4	220-600	7.7	192	230	M3 M3.5 M4 M5	31
C110P4GN	1.1	4	220-600	7.7	192	230	M3 M3.5 M4 M5	27
C040C2GS	0.4/0.2	4/8	220-600	7.7	192/96	230/115	M3 M3.5 M4 M5	27
C040C2GN	0.4/0.2	4/8	220-600	7.7	192/96	230/115	M3 M3.5 M4 M5	21
C040C3GS	0.4/0.13	4/12	220-600	7.7	192/64	230/77	M3 M3.5 M4 M5	27
C040C3GN	0.4/0.13	4/12	220-600	7.7	192/64	230/77	M3 M3.5 M4 M5	21
C060C3GS	0.6/0.2	4/12	220-600	7.7	192/64	230/77	M3 M3.5 M4 M5	31
C060C3GN	0.6/0.2	4/12	220-600	7.7	192/64	230/77	M3 M3.5 M4 M5	27
C060C2GS	0.6/0.3	4/8	220-600	7.7	192/96	230/115	M3 M3.5 M4 M5	31
C060C2GN	0.6/0.3	4/8	220-600	7.7	192/96	230/115	M3 M3.5 M4 M5	27
C075C3GS	0.75/0.25	4/12	220-600	7.7	192/64	230/77	M3 M3.5 M4 M5	35
C075C3GN	0.75/0.25	4/12	220-600	7.7	192/64	230/77	M3 M3.5 M4 M5	29
C075C2GS	0.75/0.38	4/8	220-600	7.7	192/96	230/115	M3 M3.5 M4 M5	35
C075C2GN	0.75/0.38	4/8	220-600	7.7	192/96	230/115	M3 M3.5 M4 M5	29
C110C3GS	1.1/0.37	4/12	220-600	7.7	192/64	230/77	M3 M3.5 M4 M5	38
C110C3GN	1.1/0.37	4/12	220-600	7.7	192/64	230/77	M3 M3.5 M4 M5	32
C110C2GS	1.1/0.55	4/8	220-600	7.7	192/96	230/115	M3 M3.5 M4 M5	38
C110C2GN	1.1/0.55	4/8	220-600	7.7	192/96	230/115	M3 M3.5 M4 M5	32

DIMENSION :



OUTPUT PINION :

MODULE	Number of Gear Teeth (Seperated Pinion)
M3.5	20T 21T 22T 23T 24T 25T 26T 27T 28T
M4	17T 18T 19T 20T 21T 22T 23T 24T 25T 26T 27T
M5	14T 15T 16T 17T 18T 19T

SPECIFICATION :

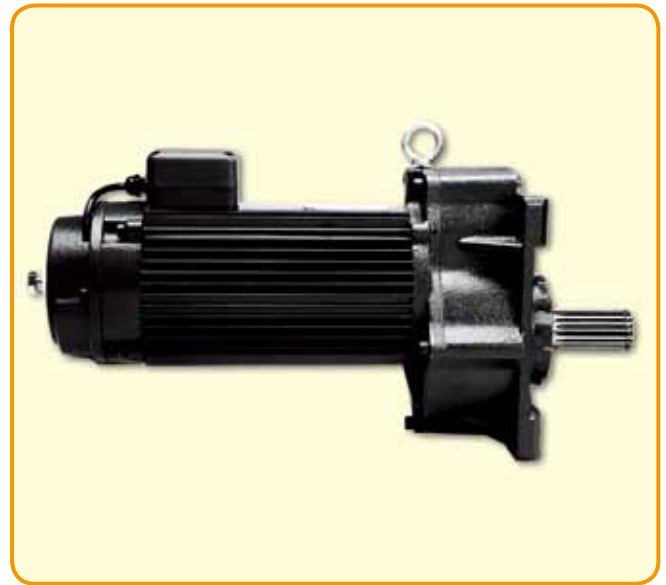
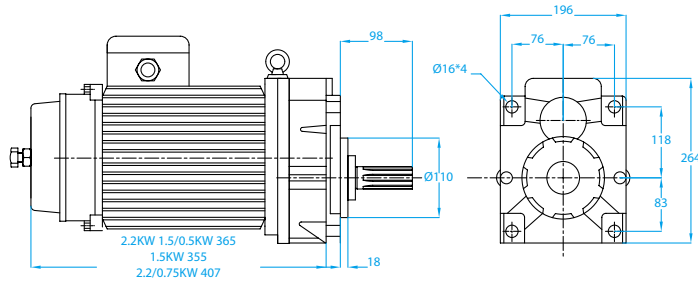
TYPE	Power KW	Pole P	VOLTAGE	RATIO	Output Speed (RPM)		MODULE	WEIGHT
					50HZ	60HZ		
D040P8GS	0.38	8	220-600	13	56.5	67.5	M3.5.M4.M5	27
D040P8GN	0.38	8	220-600	13	56.5	67.5	M3.5.M4.M5	21
D055P8GS	0.55	8	220-600	13	56.5	56.5	M3.5.M4.M5	31
D055P8GN	0.55	8	220-600	13	56.5	56.5	M3.5.M4.M5	27
D060P6GS	0.6	6	220-600	13	75	90	M3.5.M4.M5	27
D060P6GN	0.6	6	220-600	13	75	90	M3.5.M4.M5	21
D075P4GS	0.75	4	220-600	13	113	135	M3.5.M4.M5	27
D075P4GN	0.75	4	220-600	13	113	135	M3.5.M4.M5	21
D075P6GS	0.75	6	220-600	13	128	153	M3.5.M4.M5	36
D075P6GN	0.75	6	220-600	13	128	153	M3.5.M4.M5	30
D075P8GS	0.75	8	220-600	13	56.5	56.5	M3.5.M4.M5	40
D075P8GN	0.75	8	220-600	13	56.5	56.5	M3.5.M4.M5	34
D110P4GS	1.1	4	220-600	13	113	135	M3.5.M4.M5	36
D110P4GN	1.1	4	220-600	13	113	135	M3.5.M4.M5	30
D110P6GS	1.1	6	220-600	13	128	153	M3.5.M4.M5	40
D110P6GN	1.1	6	220-600	13	128	153	M3.5.M4.M5	34
D150P4GS	1.5	4	220-600	13	113	135	M3.5.M4.M5	40
D150P4GN	1.5	4	220-600	13	113	135	M3.5.M4.M5	34
D040C3GS	0.4/0.13	4/12 2/6	220-600	13	113/38	135/45	M3.5.M4.M5	27
D040C3GN	0.4/0.13	4/12 2/6	220-600	13	113/38	135/45	M3.5.M4.M5	21
D040C2GS	0.4/0.2	4/8	220-600	13	113/56	135/67	M3.5.M4.M5	27
D040C2GN	0.4/0.2	4/8	220-600	13	113/56	135/67	M3.5.M4.M5	21
D060C3GS	0.6/0.2	4/12 2/6	220-600	13	113/38	135/45	M3.5.M4.M5	29
D060C3GN	0.6/0.2	4/12 2/6	220-600	13	113/38	135/45	M3.5.M4.M5	25
D060C2GS	0.6/0.3	4/8	220-600	13	113/56	135/67	M3.5.M4.M5	29
D060C2GN	0.6/0.3	4/8	220-600	13	113/56	135/67	M3.5.M4.M5	25
D075C3GS	0.75/0.25	4/12 2/6	220-600	13	113/38	135/45	M3.5.M4.M5	32
D075C3GN	0.75/0.25	4/12 2/6	220-600	13	113/38	135/45	M3.5.M4.M5	26
D075C2GS	0.75/0.38	4/8	220-600	13	113/56	135/67	M3.5.M4.M5	32
D075C2GN	0.75/0.38	4/8	220-600	13	113/56	135/67	M3.5.M4.M5	26
D110C3GS	1.1/0.37	4/12 2/6	220-600	13	113/38	135/45	M3.5.M4.M5	42
D110C3GN	1.1/0.37	4/12 2/6	220-600	13	113/38	135/45	M3.5.M4.M5	36
D110C2GS	1.1/0.55	4/8	220-600	13	113/56	135/67	M3.5.M4.M5	42
D110C2GN	1.1/0.55	4/8	220-600	13	113/56	135/67	M3.5.M4.M5	36
D150C3GS	1.5/0.5	4/12 2/6	220-600	13	113/38	135/45	M3.5.M4.M5	46
D150C3GN	1.5/0.5	4/12 2/6	220-600	13	113/38	135/45	M3.5.M4.M5	40
D150C2GS	1.5/0.75	4/8	220-600	13	113/56	135/67	M3.5.M4.M5	46
D150C2GN	1.5/0.75	4/8	220-600	13	113/56	135/67	M3.5.M4.M5	40

* ALL TYPE 2/6P CAN CHANGE TO 2/8P



With : 1. Fix plate
2. Screw

DIMENSION :



OUTPUT PINION :

MODULE	Number of Gear Teeth (Seperated Pinion)
M4	17T 18T 19T 20T 21T 22T 23T 24T 25T 26T 27T
M5	14T 15T 16T 17T 18T 19T
M6	11T 12T 13T 14T 15T

SPECIFICATION :

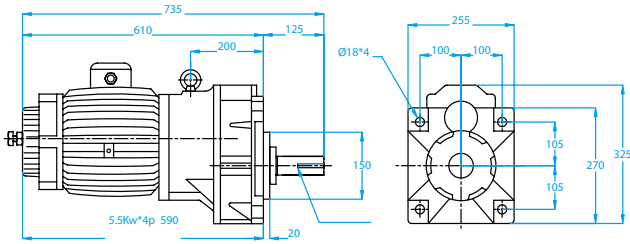
TYPE	Power	Pole	VOLTAGE	RATIO	Output Speed (RPM)		MODULE	WEIGHT
	KW	P			50HZ	60HZ		
E075P6LS	0.75	6	220-600	16	61	73	M4 M5 M6	43
E110P4LS	1.1	4	220-600	16	91	109	M4 M5 M6	43
E110P6LS	1.1	6	220-600	16	61	73	M4 M5 M6	50
E150P4LS	1.5	4	220-600	16	91	109	M4 M5 M6	50
E150P6LS	1.5	6	220-600	16	61	73	M4 M5 M6	65
E220P4LS	2.2	4	220-600	16	91	109	M4 M5 M6	65
E220P6LS	2.2	6	220-600	16	61	73	M4 M5 M6	88
E300P4LS	3	4	220-600	16	61	73	M4 M5 M6	88
E060C3LS	0.6/0.2	4/12 2/6	220-600	16	91/30	109/36	M4 M5 M6	43
E060C2LS	0.6/0.3	4/8	220-600	16	91/45	109/55	M4 M5 M6	43
E075C3LS	0.75/0.25	4/12 2/6	220-600	16	91/30	109/36	M4 M5 M6	50
E075C2LS	0.75/0.38	4/8	220-600	16	91/45	109/55	M4 M5 M6	50
E150C3LS	1.5/0.5	4/12 2/6	220-600	16	91/30	109/36	M4 M5 M6	65
E150C2LS	1.5/0.75	4/8	220-600	16	91/45	109/55	M4 M5 M6	65
E220C3LS	2.2/0.75	4/12 2/6	220-600	16	91/30	109/36	M4 M5 M6	90
E220C2LS	2.2/1.1	4/8	220-600	16	91/45	109/55	M4 M5 M6	90

TYPE	Power	Pole	VOLTAGE	RATIO	Output Speed (RPM)		MODULE	WEIGHT
	KW	P			50HZ	60HZ		
E075P6HS	0.75	6	220-600	11.5	85	102	M4 M5 M6	43
E110P4HS	1.1	4	220-600	11.5	127	153	M4 M5 M6	43
E110P6HS	1.1	6	220-600	11.5	85	102	M4 M5 M6	50
E150P4HS	1.5	4	220-600	11.5	127	153	M4 M5 M6	50
E150P6HS	1.5	6	220-600	11.5	85	102	M4 M5 M6	65
E220P4HS	2.2	4	220-600	11.5	127	153	M4 M5 M6	65
E220P6HS	2.2	6	220-600	11.5	85	102	M4 M5 M6	88
E300P4HS	3	4	220-600	11.5	85	102	M4 M5 M6	88
E060C3HS	0.6/0.2	4/12 2/6	220-600	11.5	127/42	153/51	M4 M5 M6	43
E060C2HS	0.6/0.3	4/8	220-600	11.5	127/63	153/76	M4 M5 M6	43
E075C3HS	0.75/0.25	4/12 2/6	220-600	11.5	127/42	153/51	M4 M5 M6	50
E075C2HS	0.75/0.38	4/8	220-600	11.5	127/63	153/76	M4 M5 M6	50
E150C3HS	1.5/0.5	4/12 2/6	220-600	11.5	127/42	153/51	M4 M5 M6	65
E150C2HS	1.5/0.75	4/8	220-600	11.5	127/63	153/76	M4 M5 M6	65
E220C3HS	2.2/0.75	4/12 2/6	220-600	11.5	127/42	153/51	M4 M5 M6	90
E220C2HS	2.2/1.1	4/8	220-600	11.5	127/63	153/76	M4 M5 M6	90



With : 1. Fix plate
2. Screw

DIMENSION :



OUTPUT PINION :

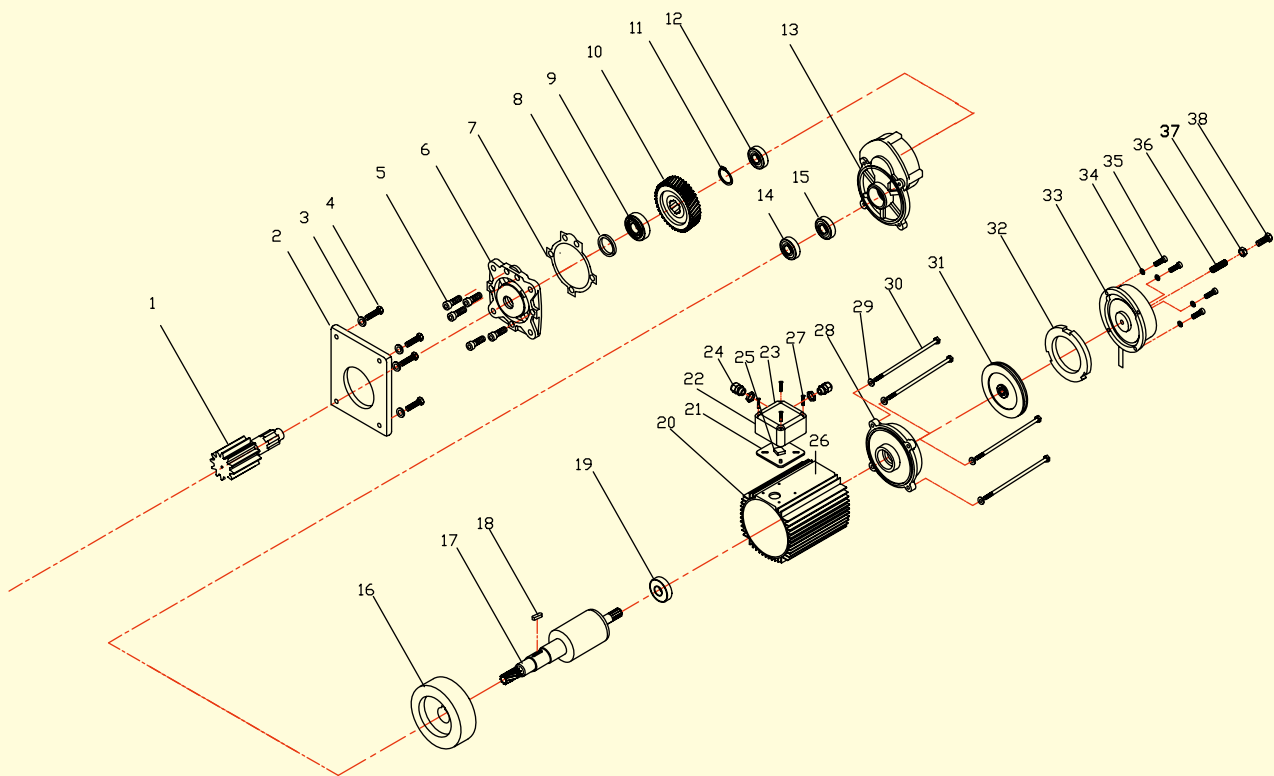
MODULE	Number of Gear Teeth (Seperated Pinion)
M4	16T 17T 18T 19T 20T 21T 22T 23T 24T 25T
M5	13T 14T 15T 16T 17T 18T 19T 20T
M6	13T 14T 15T 16T

SPECIFICATION :

TYPE	Power	Pole	VOLTAGE	RATIO	Output Speed (RPM)		MODULE	WEIGHT
	KW	P			50HZ	60HZ		
F220P6LS	2.2	6	220-600	18.5	53	63	M4 M5 M6	110
F375P4LS	3.75	4	220-600	18.5	79	95	M4 M5 M6	110
F375P6LS	3.75	6	220-600	18.5	53	63	M4 M5 M6	139
F550P4LS	5.5	4	220-600	18.5	79	95	M4 M5 M6	139
F550P6LS	5.5	6	220-600	18.5	53	63	M4 M5 M6	148
F750P4LS	7.5	4	220-600	18.5	79	95	M4 M5 M6	148
F220C3LS	2.2/0.75	4/12	220-600	18.5	79/26	95/32	M4 M5 M6	110
F220C2LS	2.2/1.1	4/8	220-600	18.5	79/39	95/47	M4 M5 M6	110
F300C3LS	3/1	4/12	220*600	18.5	79/26	95/32	M4 M5 M6	139
F300C2LS	3/1.5	4/8	220-600	18.5	79/39	95/47	M4 M5 M6	139
F375C3LS	3.75/1.25	4/12	220-600	18.5	79/26	95/32	M4 M5 M6	148
F375C2LS	3.75/1.8	4/8	220-600	18.5	79/39	95/47	M4 M5 M6	148
F550C3LS	5.5/1.8	4/12	220-600	18.5	79/26	95/32	M4 M5 M6	153
F550C2LS	5.5/2.75	4/8	220-600	18.5	79/39	95/47	M4 M5 M6	153
F750C3LS	7.5/2.5	4/12	220-600	18.5	79/26	95/32	M4 M5 M6	178
F750C2LS	7.5/3.75	4/8	220-600	18.5	79/39	95/47	M4 M5 M6	178

TYPE	Power	Pole	VOLTAGE	RATIO	Output Speed (RPM)		MODULE	WEIGHT
	KW	P			50HZ	60HZ		
F220P6HS	2.2	6	220-600	12	97	117	M4 M5 M6	110
F375P4HS	3.75	4	220-600	12	145	175	M4 M5 M6	110
F375P6HS	3.75	6	220-600	12	97	117	M4 M5 M6	139
F550P4HS	5.5	4	220-600	12	145	175	M4 M5 M6	139
F550P6HS	5.5	6	220-600	12	97	117	M4 M5 M6	148
F750P4HS	7.5	4	220-600	12	145	175	M4 M5 M6	148
F220C3HS	2.2/0.75	4/12	220-600	12	145/48	175/58	M4 M5 M6	110
F220C2HS	2.2/1.1	4/8	220-600	12	145/72	175/87	M4 M5 M6	110
F300C3HS	3/1	4/12	220*600	12	145/48	175/58	M4 M5 M6	139
F300C2HS	3/1.5	4/8	220-600	12	145/72	175/87	M4 M5 M6	139
F375C3HS	3.75/1.25	4/12	220-600	12	145/48	175/58	M4 M5 M6	148
F375C2HS	3.75/1.8	4/8	220-600	12	145/72	175/87	M4 M5 M6	148
F550C3HS	5.5/1.8	4/12	220-600	12	145/48	175/58	M4 M5 M6	153
F550C2HS	5.5/2.75	4/8	220-600	12	145/72	175/87	M4 M5 M6	153
F750C3HS	7.5/2.5	4/12	220-600	12	145/48	175/58	M4 M5 M6	178
F750C2HS	7.5/3.75	4/8	220-600	12	145/72	175/87	M4 M5 M6	178

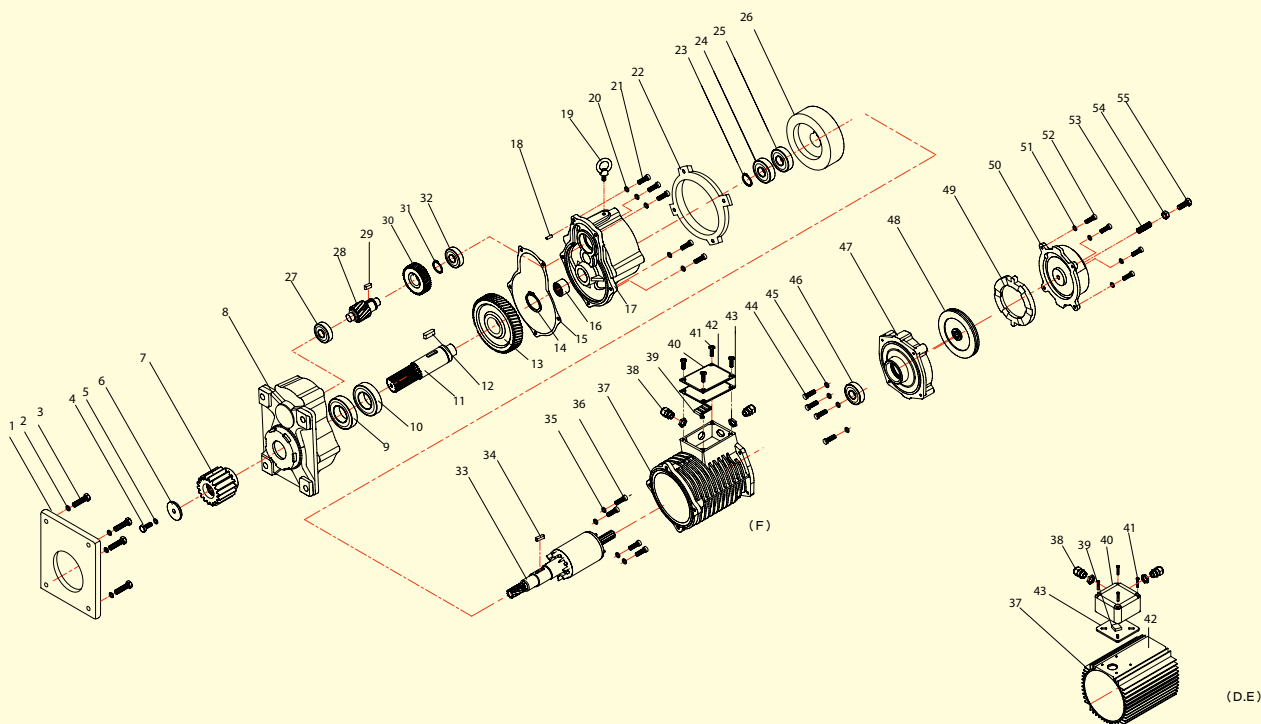
Exploded View-B.C TYPE



ITEM	DESCRIPTION	Q'TY
1	PINION-SHAFT	1
2	PLATE	1
3	SPRING LOCK WASHER	4
4	HEX-BOLT	4
5	HEX-SOCKET CAP BOLT	5
6	GEAR CASE A	1
7	PAPER SLICE	1
8	BUSH	1
9	BALL BEARING	1
10	1ST GEAR	1
11	GEAR RING	1
12	BALL BEARING	1
13	GEAR CASE B	1
14	BALL BEARING	1
15	BALL BEARING	1
16	FLYWHEEL	1
17	ROTOR+1ST PINION	1
18	ROTOR+1ST PINION KEY	1
19	BALL BEARING	1
20	MOTOR HOUSING	1

ITEM	DESCRIPTION	Q'TY
21	GASKET	1
22	ALUMINIUM BOX	1
23	ALUMINIUM COVER	1
24	CABLE GLAND	2
25	DIODE	1
26	NAME PLATE	1
27	HEX-SOCKET CAP BOLT	4
28	MOTOR COVER FOR BRAKE	1
29	SPRING LOCK WASHER	4
30	HEX-SOCKET CAP BOLT	4
31	BRAKE LINING	1
32	FRICTION DISC	1
33	BRAKE COVER	1
34	SPRING LOCK WASHER	3
35	HEX-SOCKET CAP BOLT	3
36	BRAKE SPRING	1
37	TORQUE ADJUSTING NUT	1
38	TORQUE ADJUSTING BOLT	1

Exploded View-D.E.F TYPE



ITEM	DESCRIPTION	Q'TY
1	PLATE	1
2	SPRING LOCK WASHER	4
3	HEX BOLT	4
4	TORQUE ADJUSTING BOLT	1
5	SPRING LOCK WASHER	1
6	WASHER	1
7	DUT-PUT GEER	1
8	GEAR CASE A	1
9	BALL BEARING 6209ZZ	1
10	BALL BEARING 6209ZZ	1
11	DUT-PUT SHAFT	1
12	KEY	1
13	2ND GEER	1
14	DUT-PUT SHAFT RING	1
15	PAPER SLICE	1
16	LONG ROLLER BEARING	1
17	GEAR CASE B	1
18	PIN	1
19	EYEBOLT	1
20	SPRING LOCK WASHER	5
21	HEX-SOCKET CAP BOLT	5
22	CONNET PLATE	1
23	SHAFT RETAINING RING	1
24	BALL BEARING	1
25	BALL BEARING	1
26	FLYWHEEL	1
27	BALL BEARING	1
28	1ND PINION	1

ITEM	DESCRIPTION	Q'TY
29	KEY	1
30	1ND GEAR	1
31	1ND PINION RING	1
32	BALL BEARING	1
33	ROTOR + 1ST SHAFT	1
34	ROTOR + 1ST SHAFT KEY	1
35	SPRING LOCK WASHER	4
36	HEX-SOCKET CAP BOLT	4
37	MOTOR HOUSING	1
38	PLATICS BOLT+NUT	2
39	DIODE	1
40	HOUSING TOP COVER	1
41	COVER BOLT	4
42	NAME PLATE	1
43	PAPER SLICE	1
44	HEX-SOCKET CAP BOLT	4
45	SPRING LOCK WASHER	4
46	BALL BEARING	1
47	MOTOR COVER FOR BRAKE	1
48	BRAKE LINING	1
49	FRICTION DISC	1
50	BRAKE COVER	1
51	SPRING LOCK WASHER	4
52	HEX-SOCKET CAP BOLT	4
53	BRAKE SPRING	1
54	TORQUE ADJUSTING NUT	1
55	TORQUE ADJUSTING BOLT	1



WARNING:

The equipment shown in this catalogue is intended for industrial use only and should not be used to lift, support, or otherwise transport people, or to suspend loads over people.



TAIWAN HOIST AND CRANE CO., LTD.

NO.,88, Ln.157, Shandong Rd., Zhongli City,
 Taoyuan County 320, TAIWAN (R.O.C.)
 Tel: +886-3-498-4188
 Fax: +886-3-498-4198
 E-Mail: thac@taiwanhoist.com.tw
 Website: <http://www.taiwanhoist.com.tw>

Distributed By: